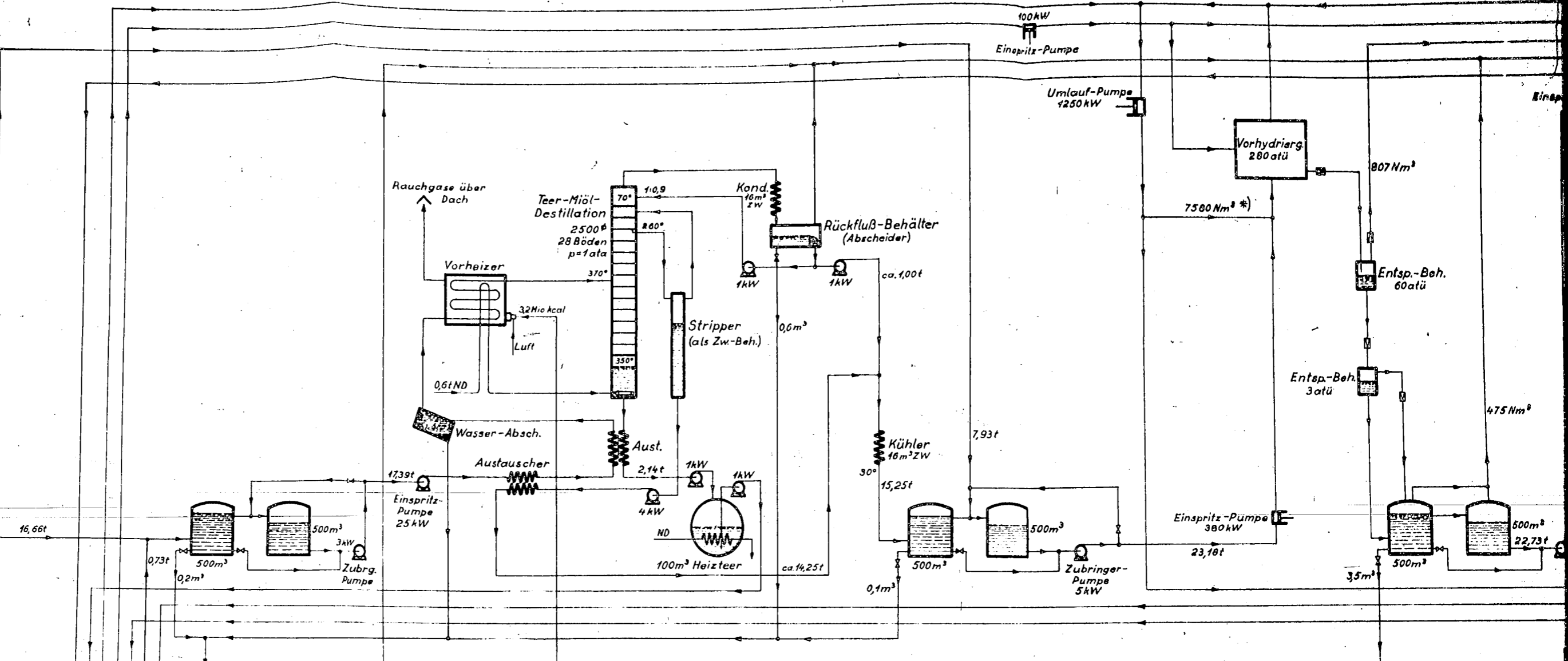
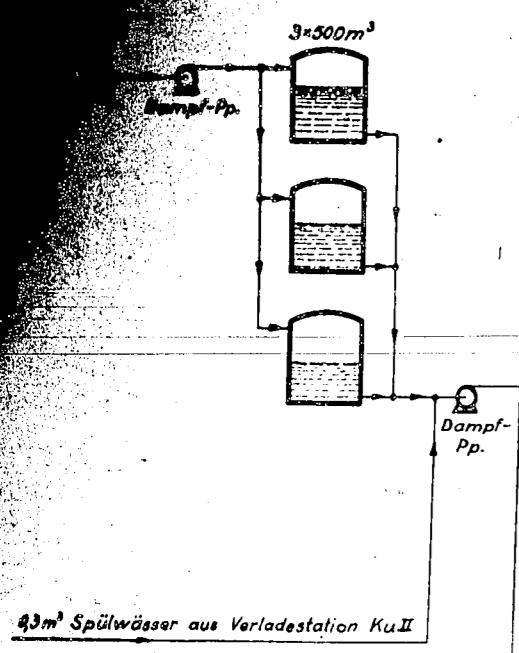
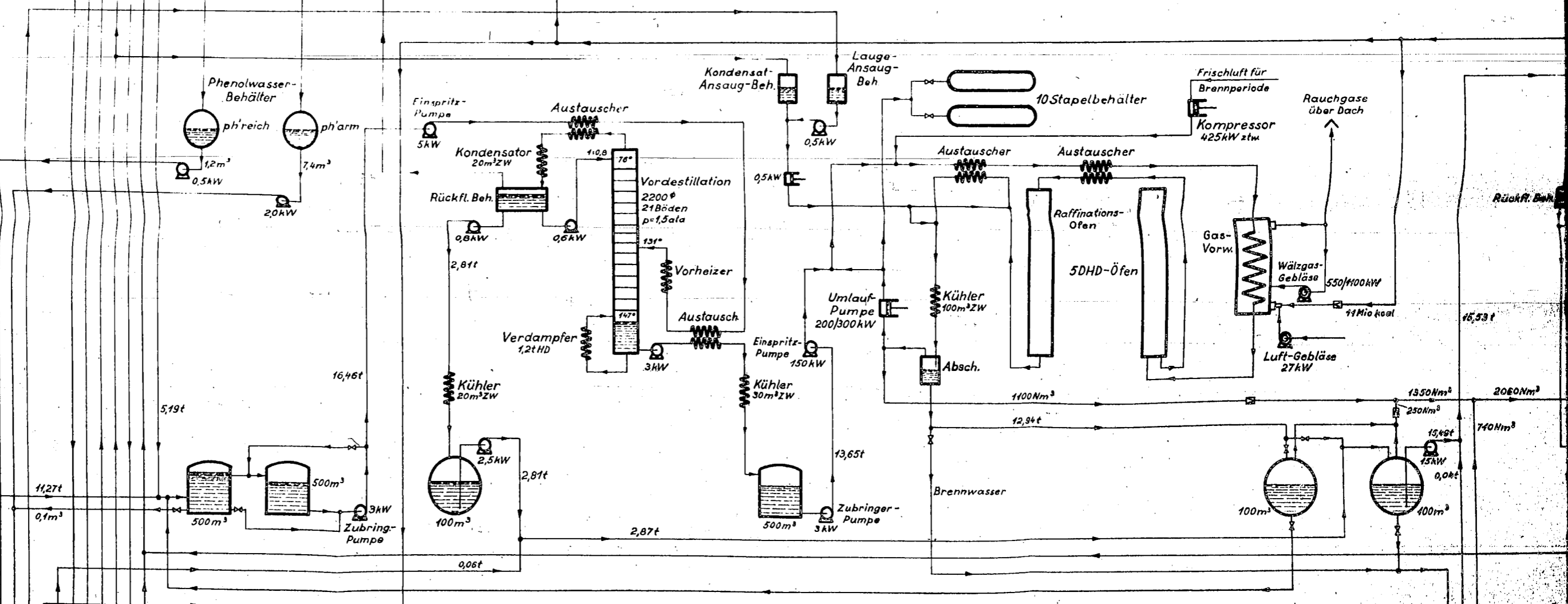
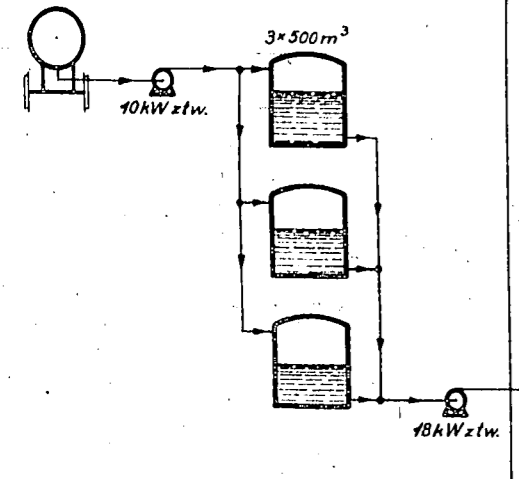


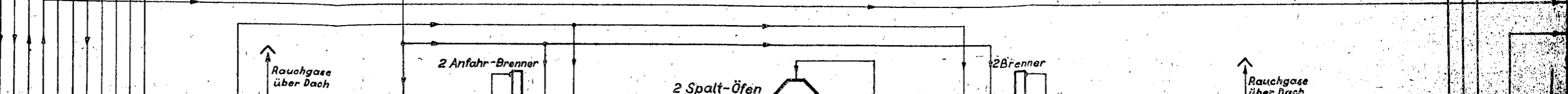
19.

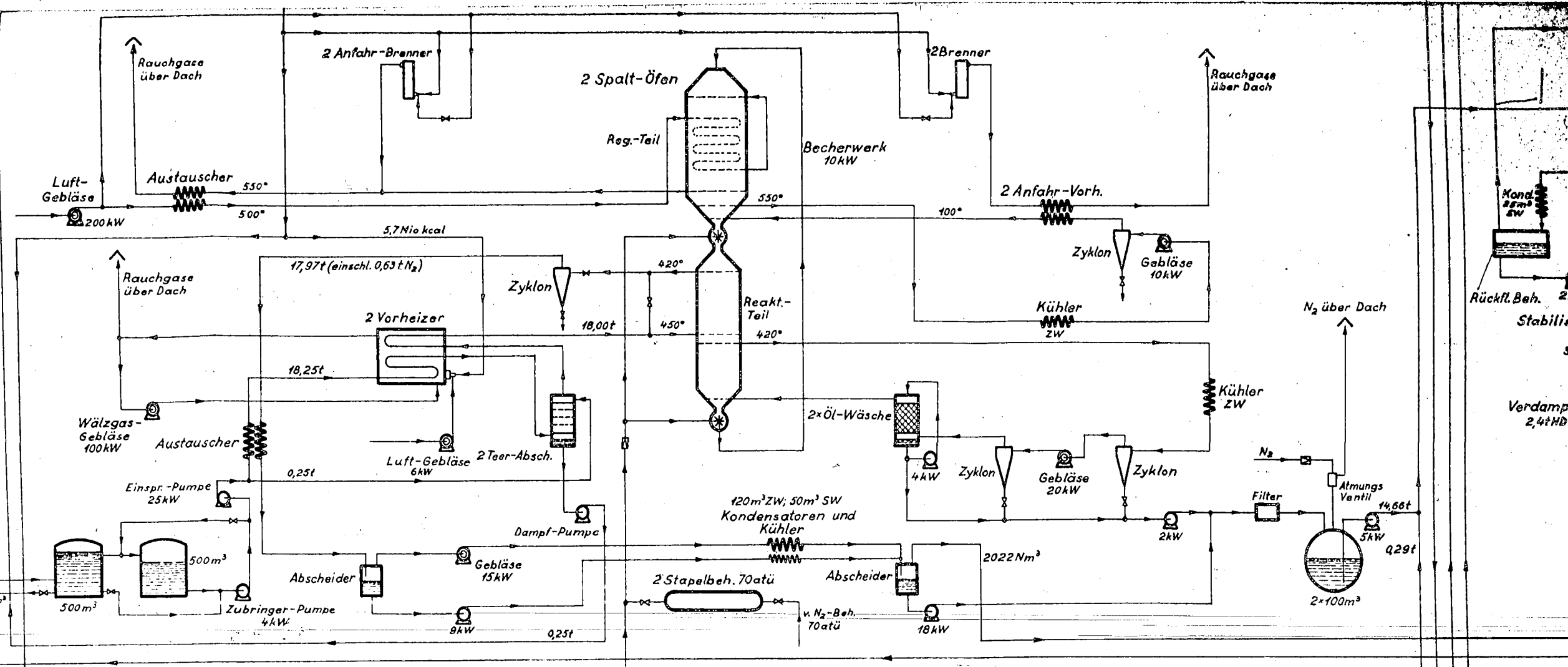


DHD

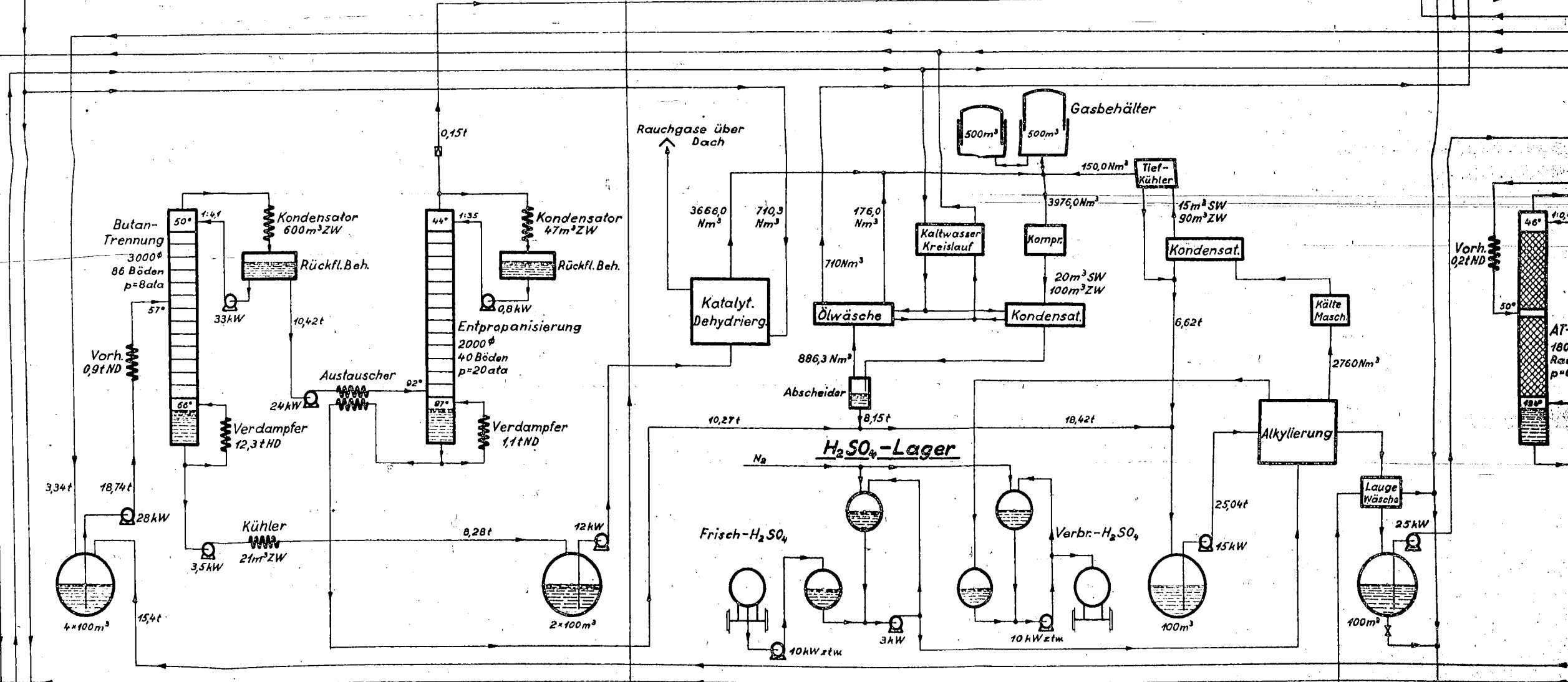


KK

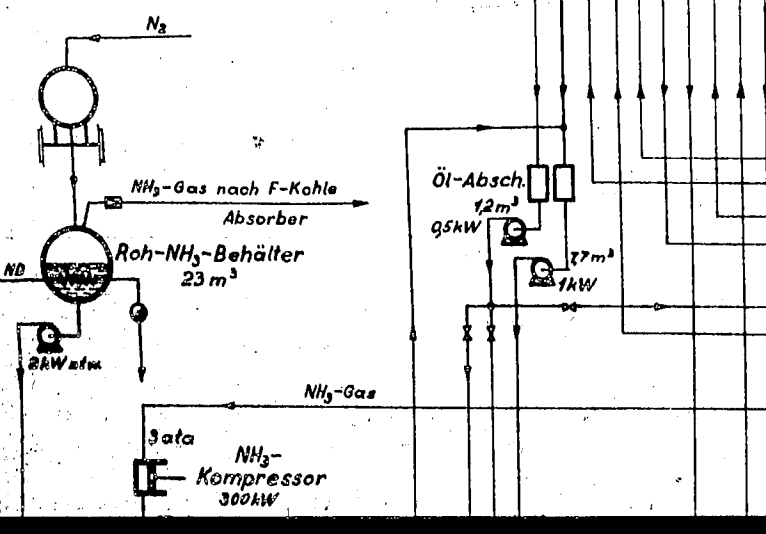




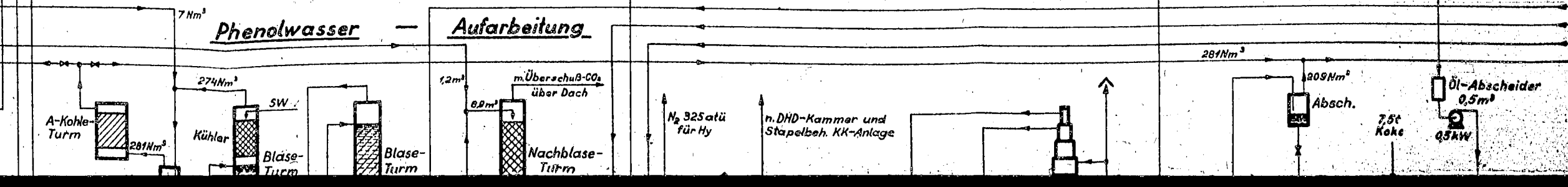
**AT**



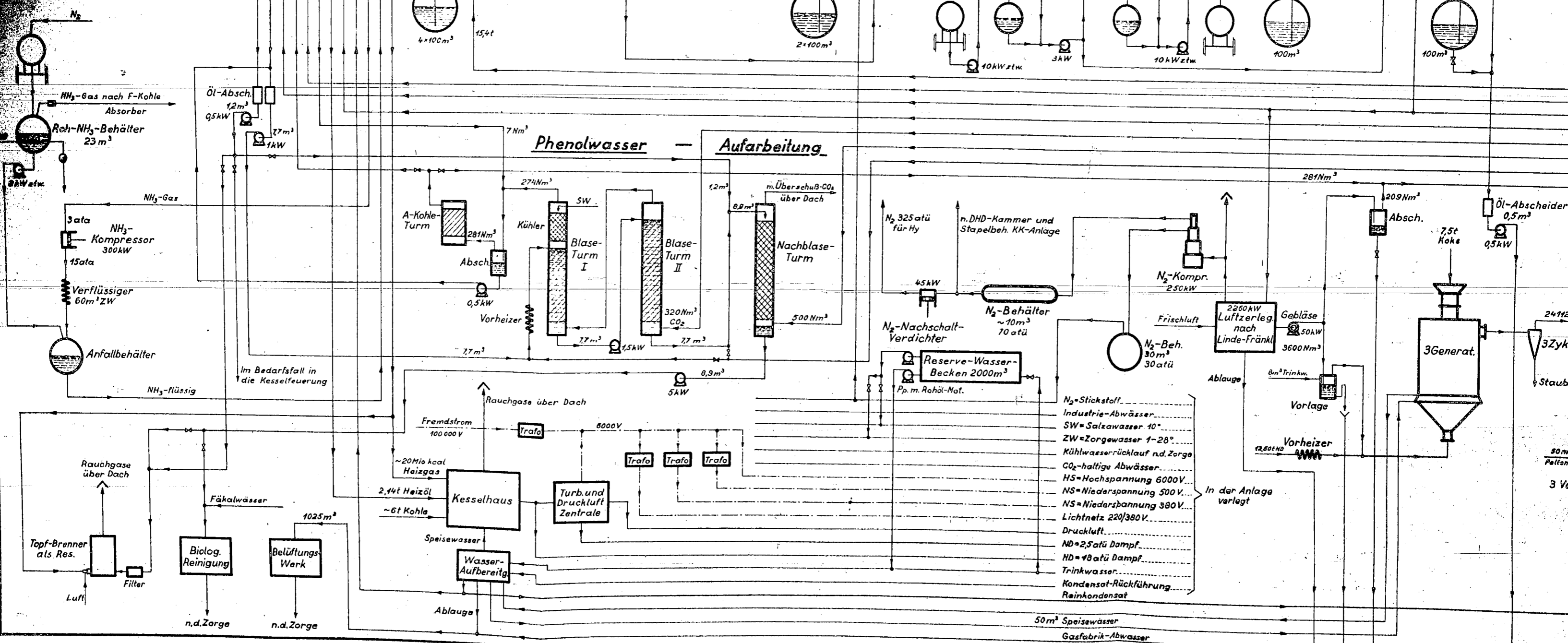
**Kälte-Anlage**



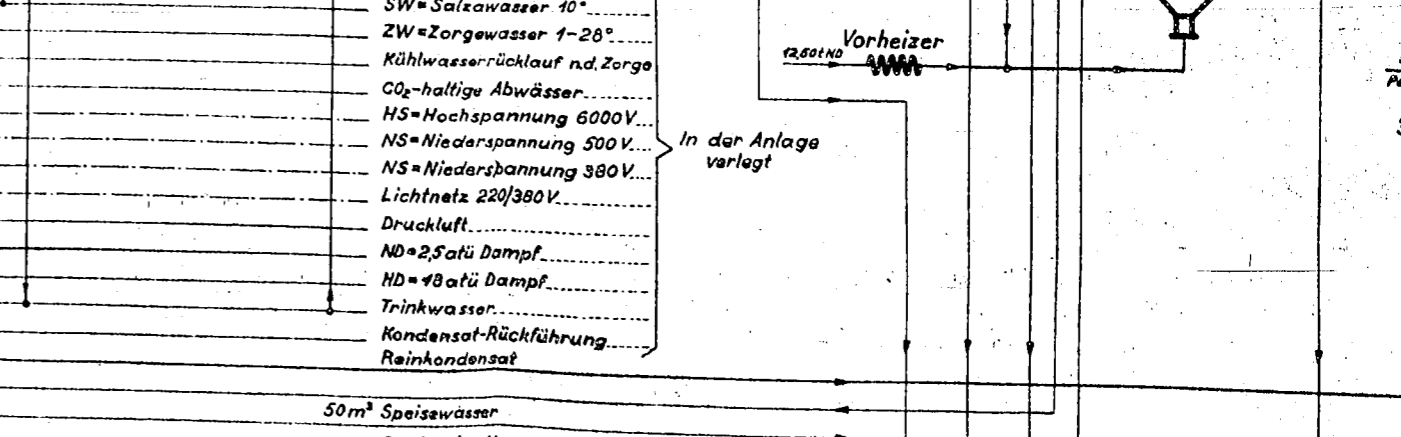
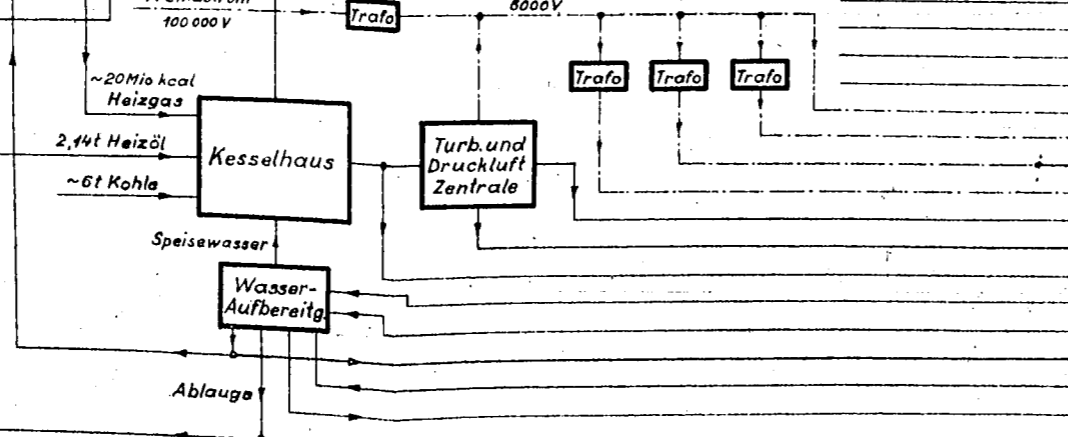
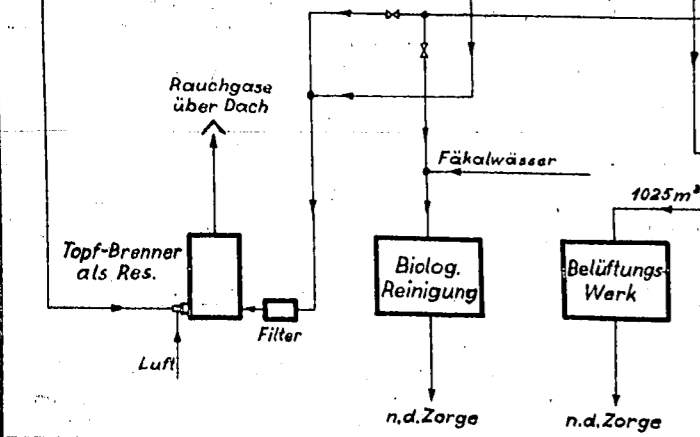
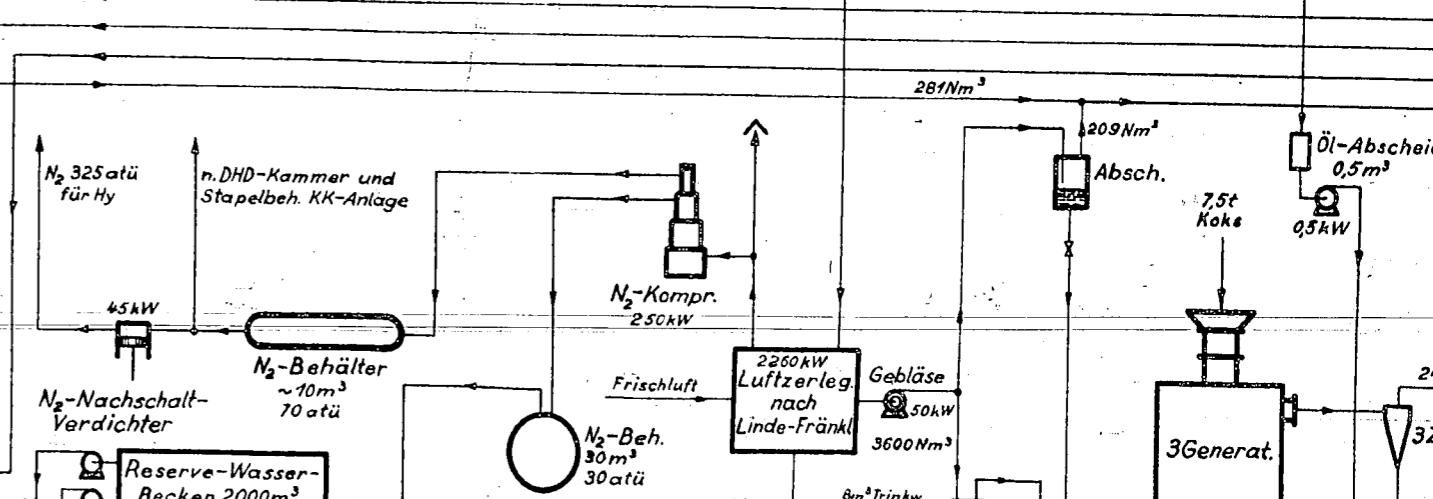
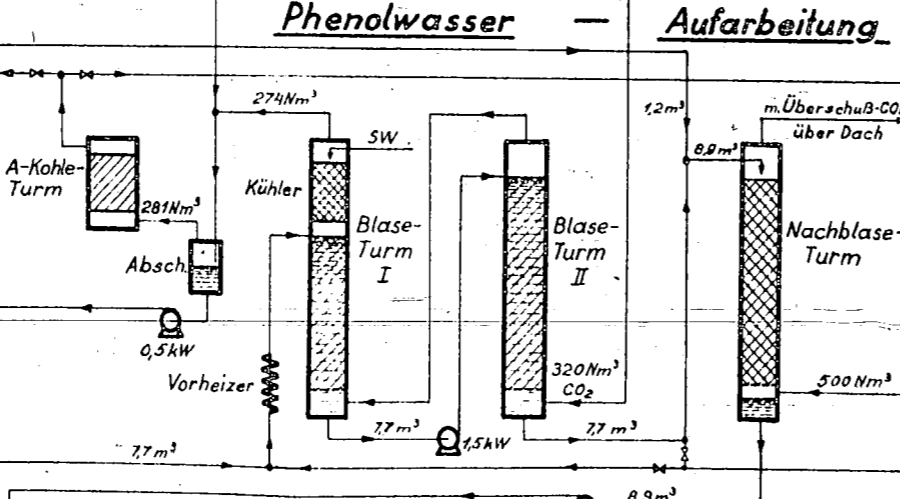
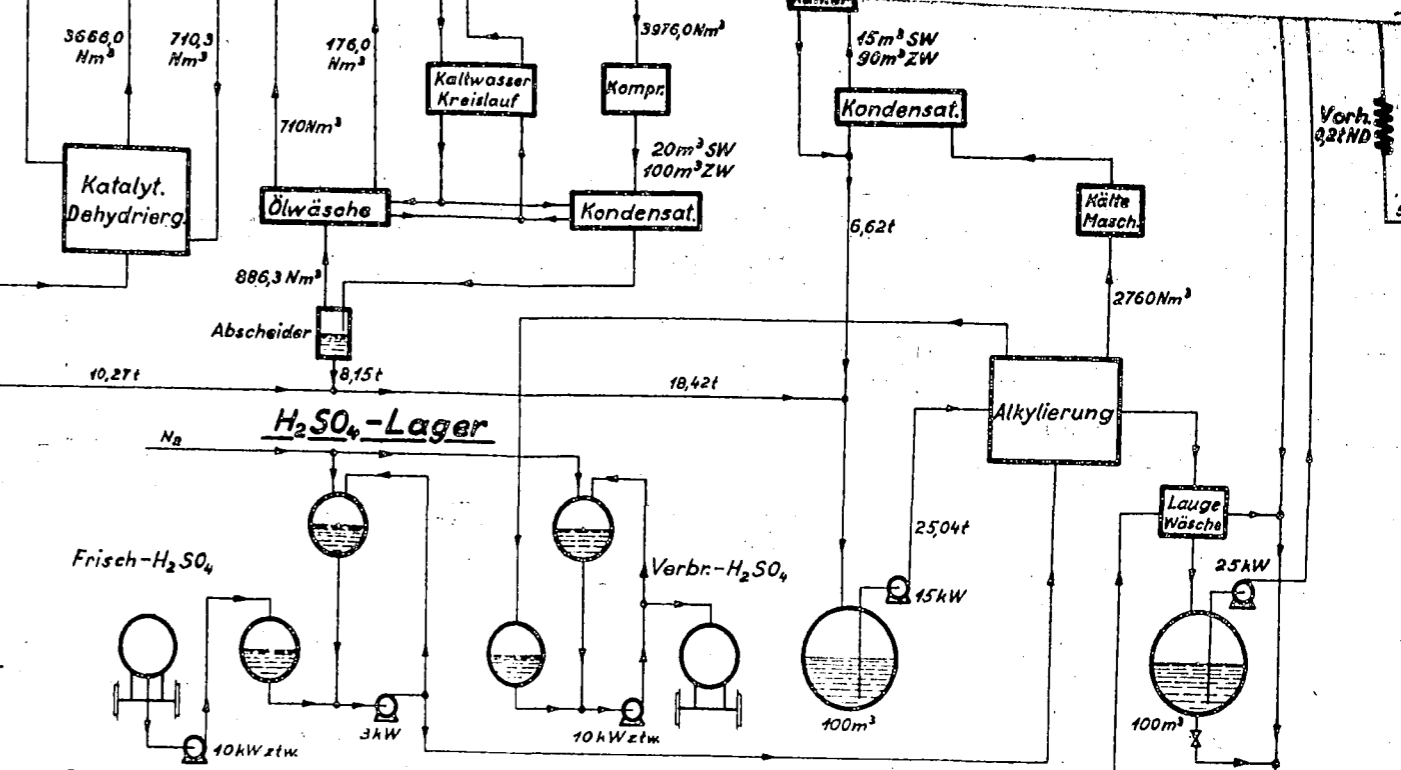
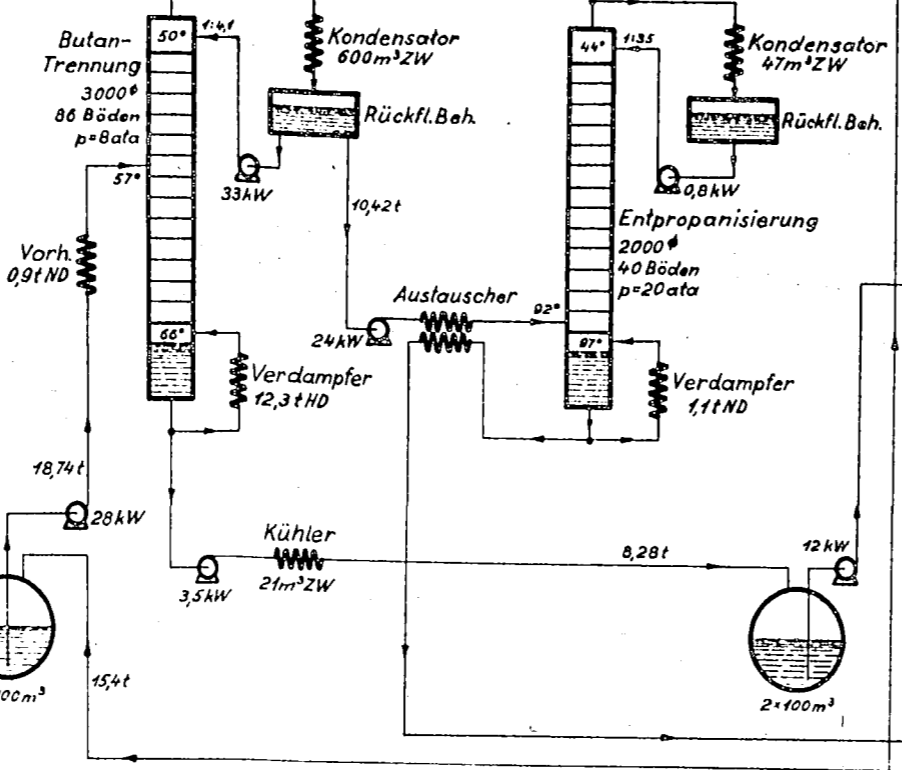
**Phenolwasser — Aufarbeitung**

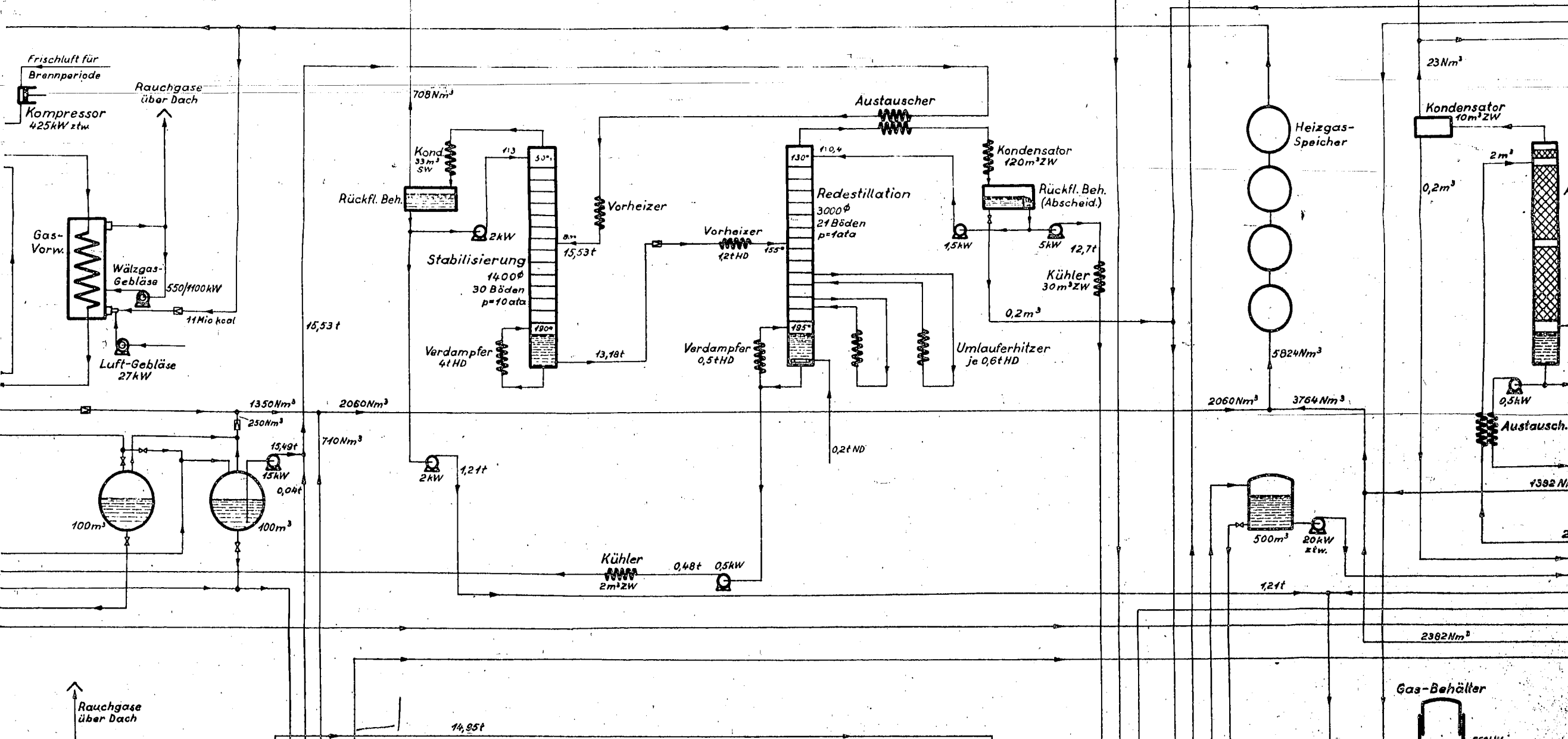
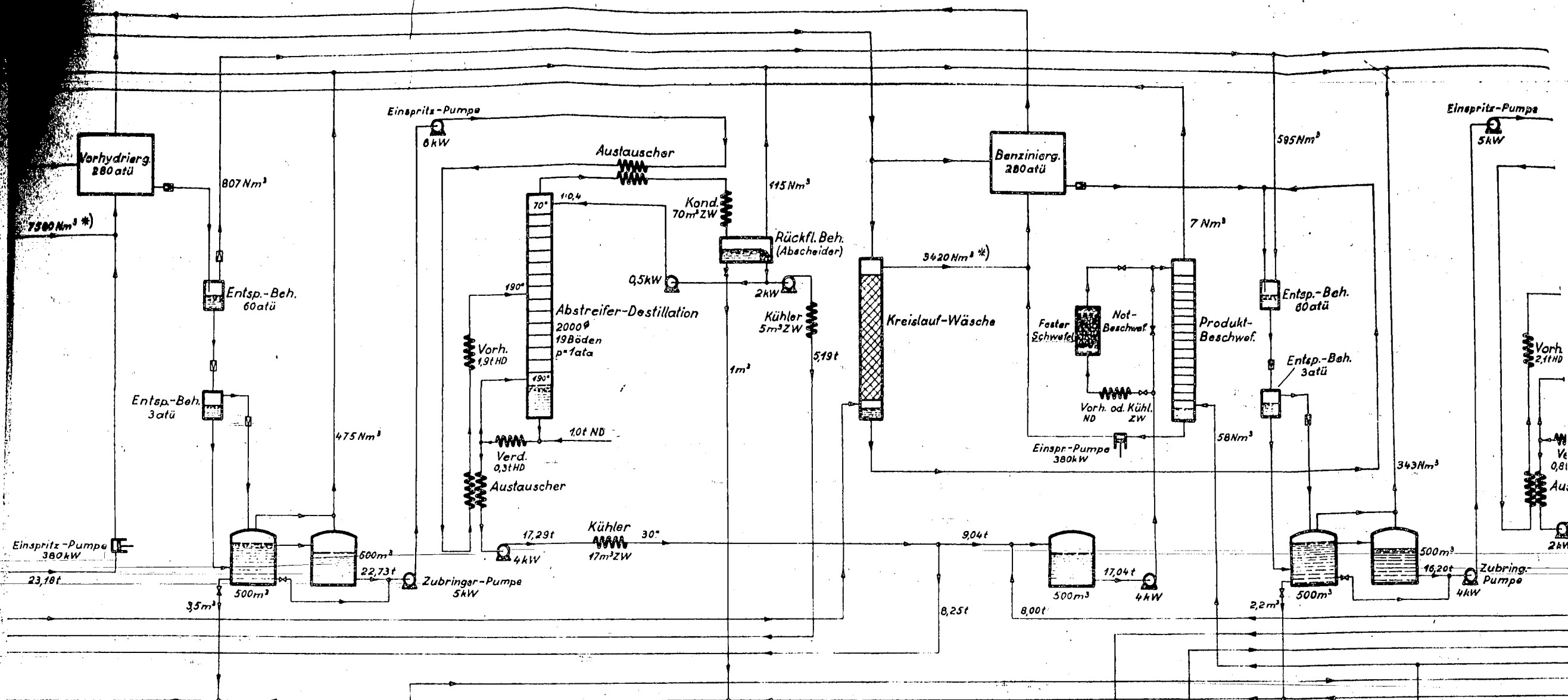


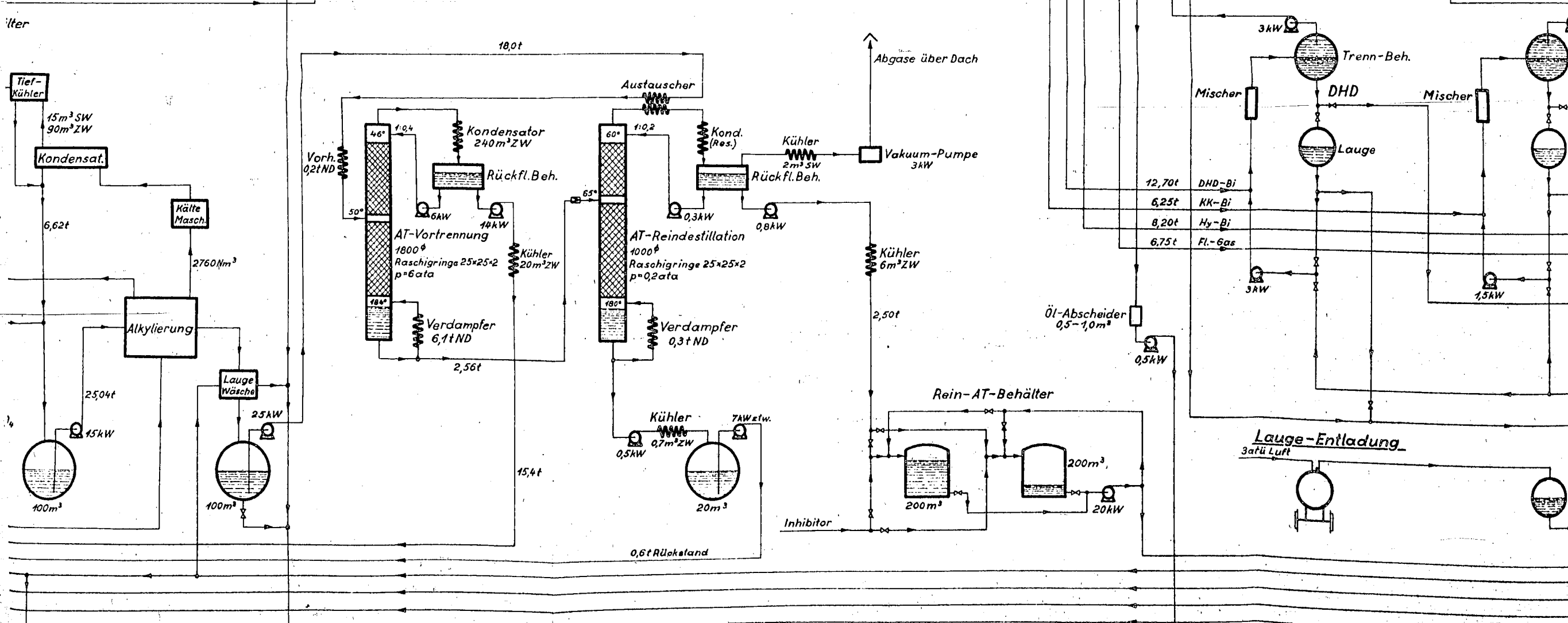
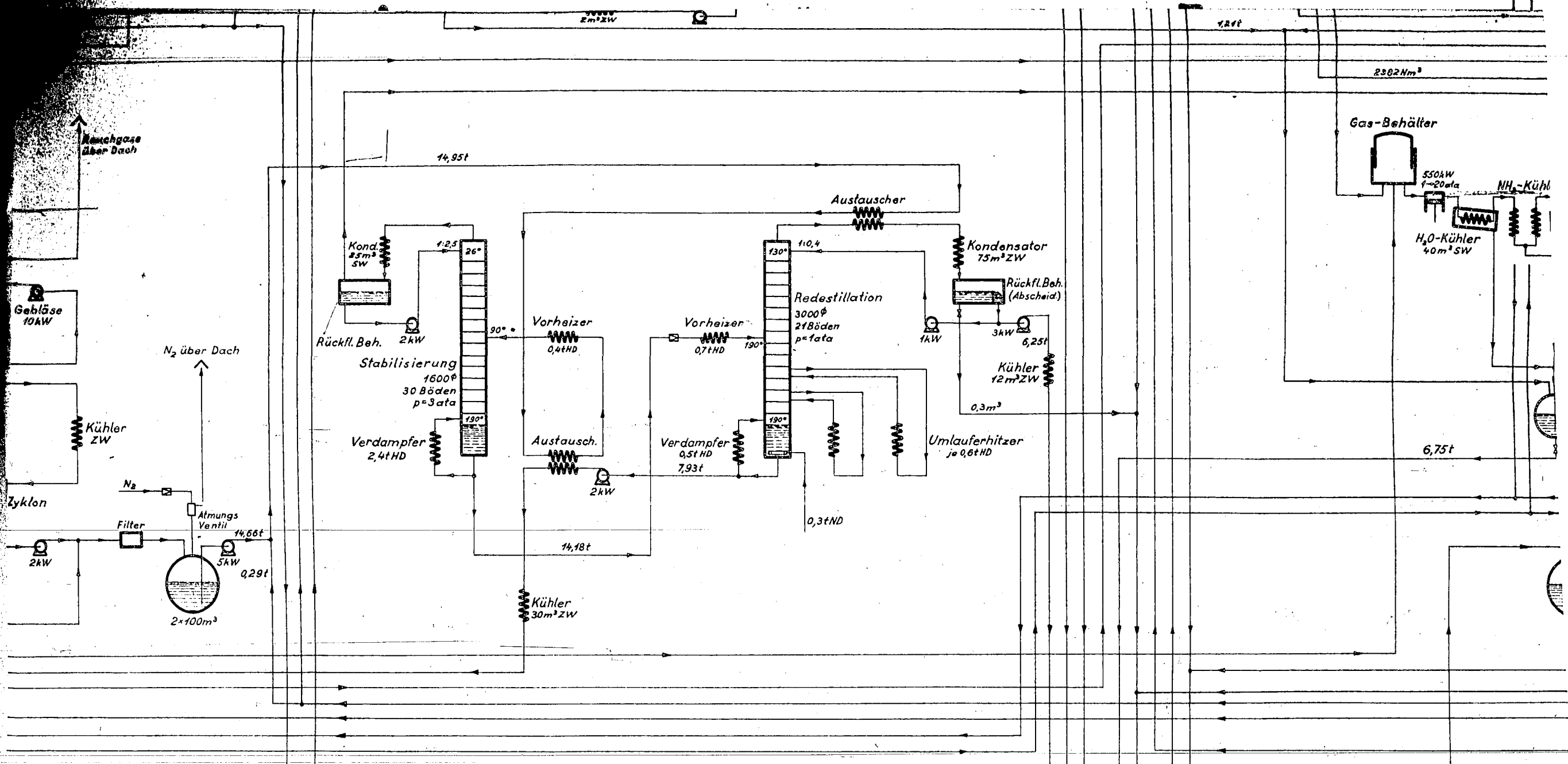
# Ammoniak-Anlage

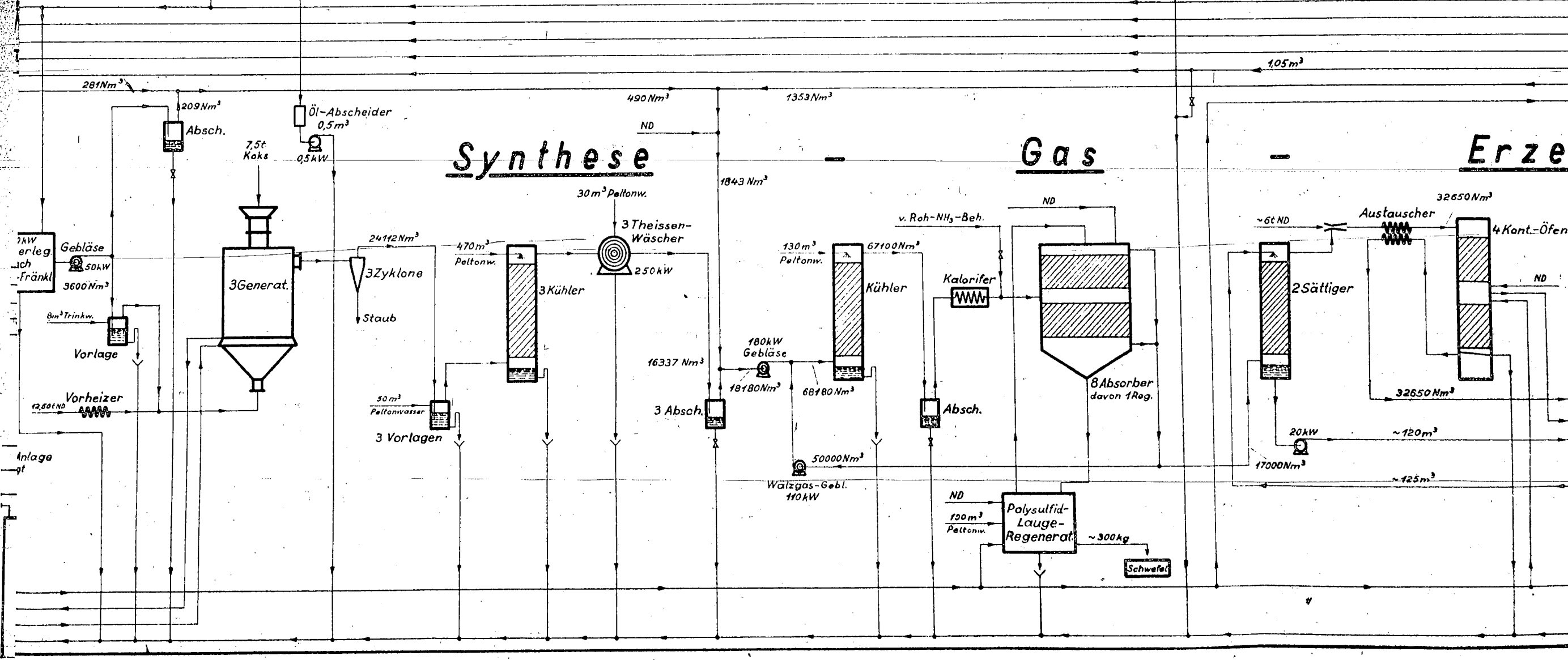
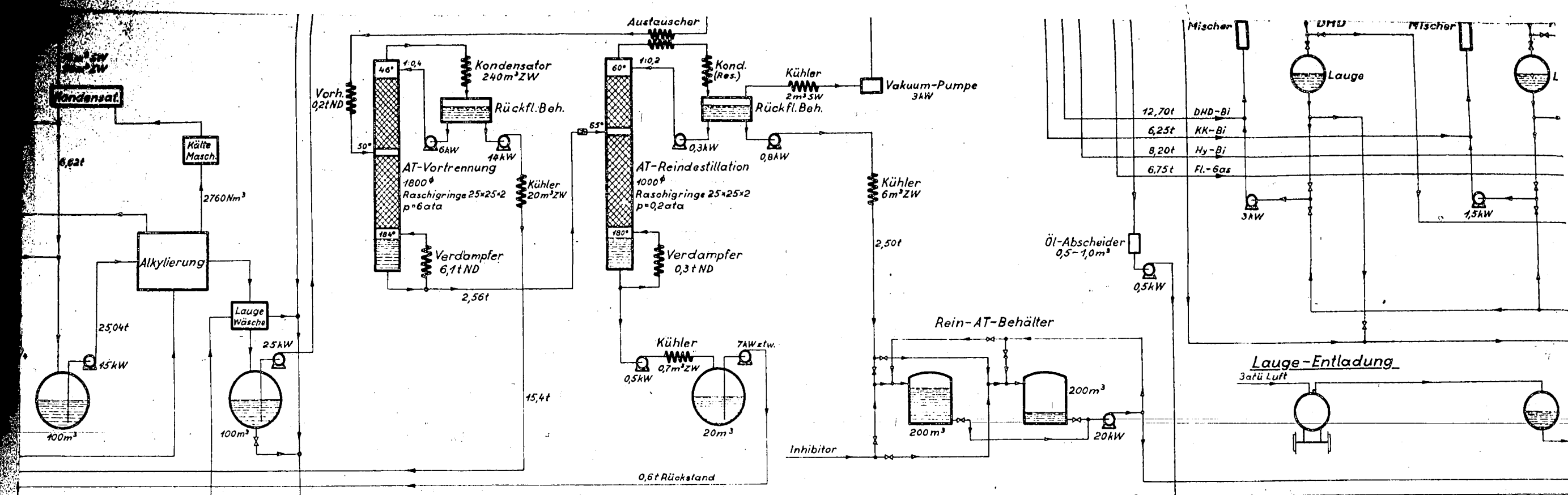


phenolreiches Wasser  
phenolarmes Wasser



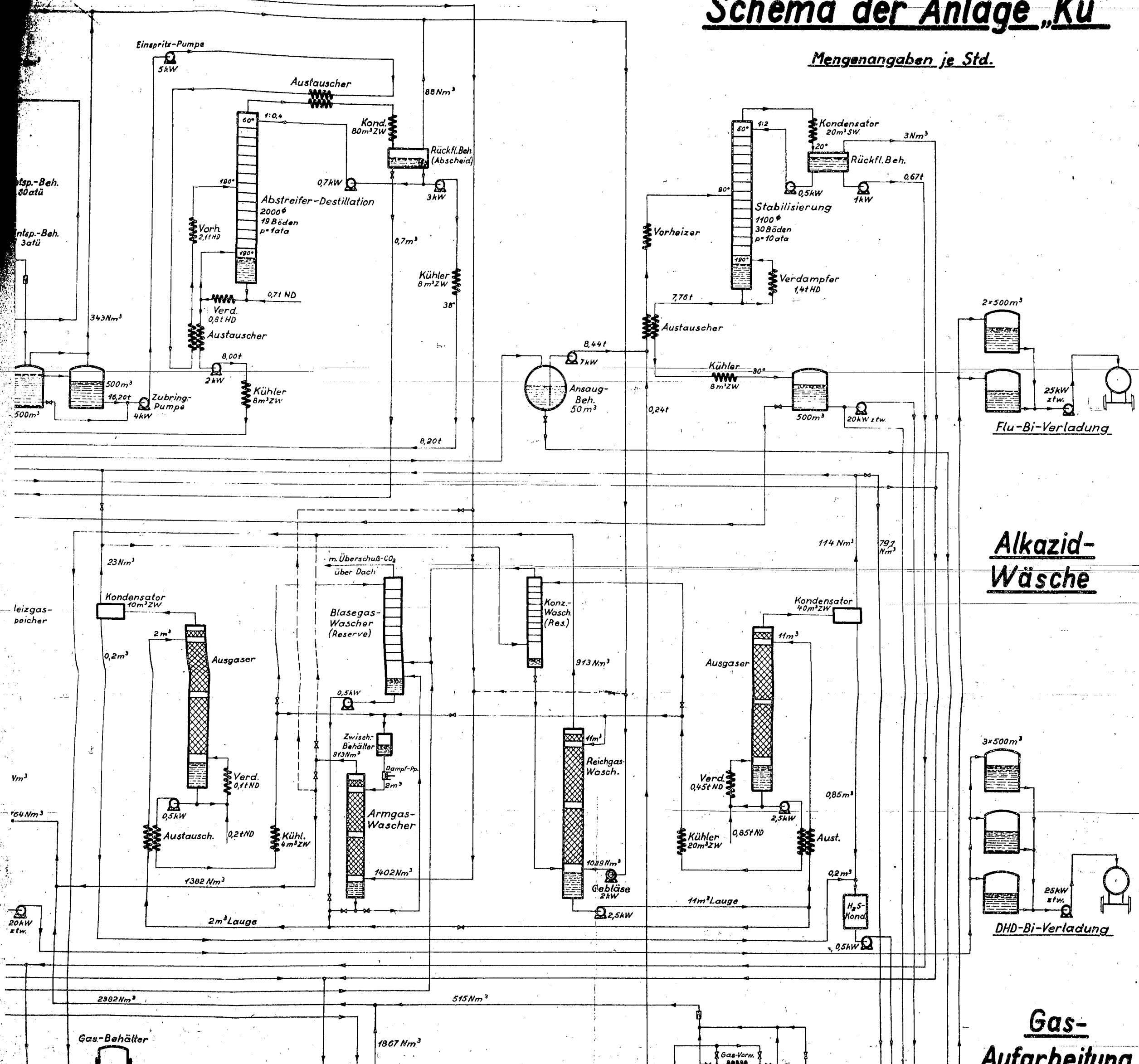






# Schema der Anlage „Ku“

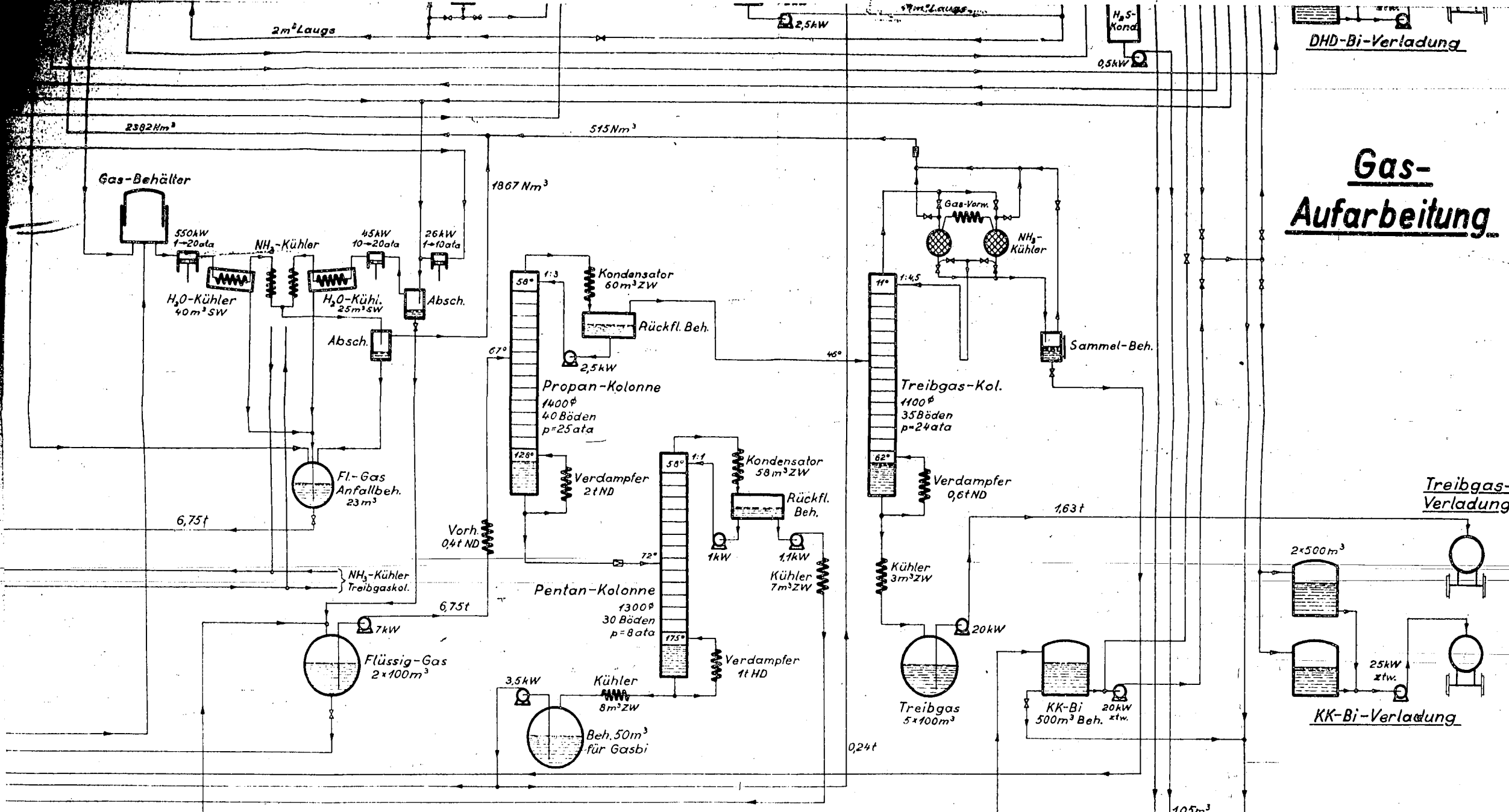
Mengenangaben je Std.



Alkazid-  
Wäsche

3x500m<sup>3</sup>  
25kW ztw.  
DHD-Bi-Verladung

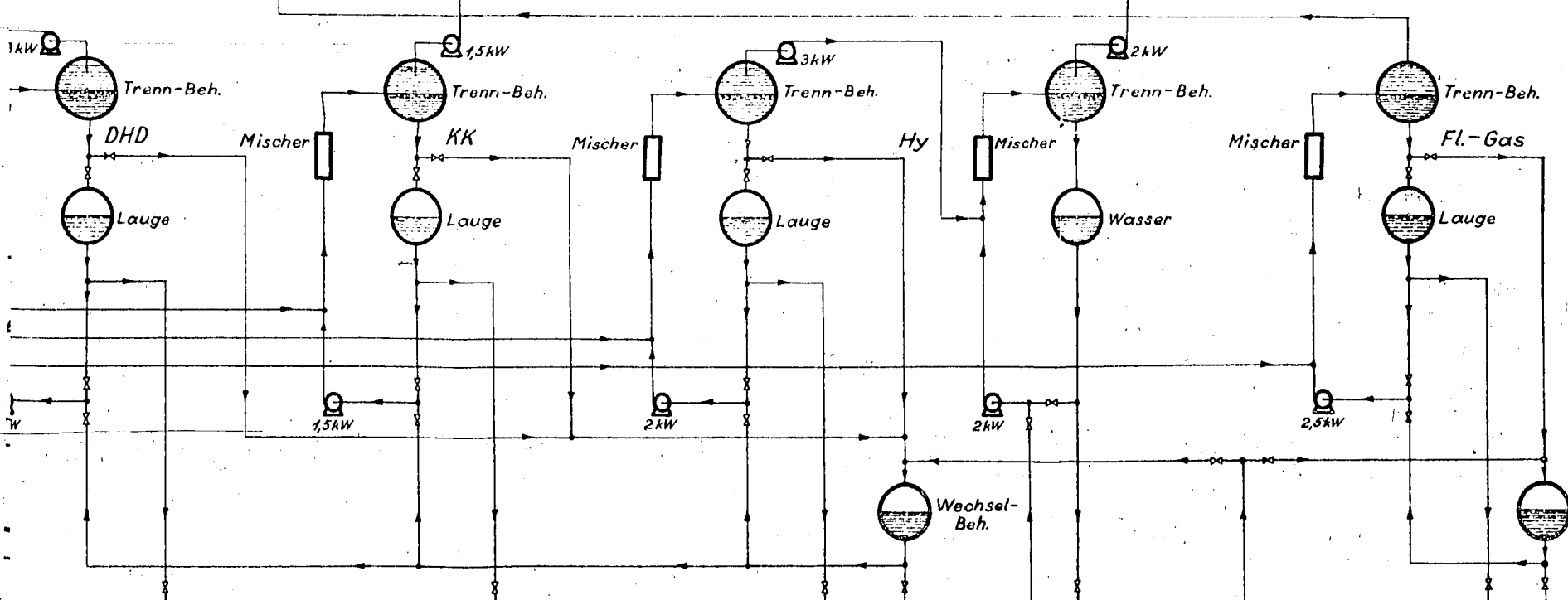
Gas-  
Aufarbeitung



# Gas-Aufarbeitung

## Treibgas-Verladung

## KK-Bi-Verladung



# Bi-Waschen

## Lauge-Entladung

## Lauge-Verdünnung

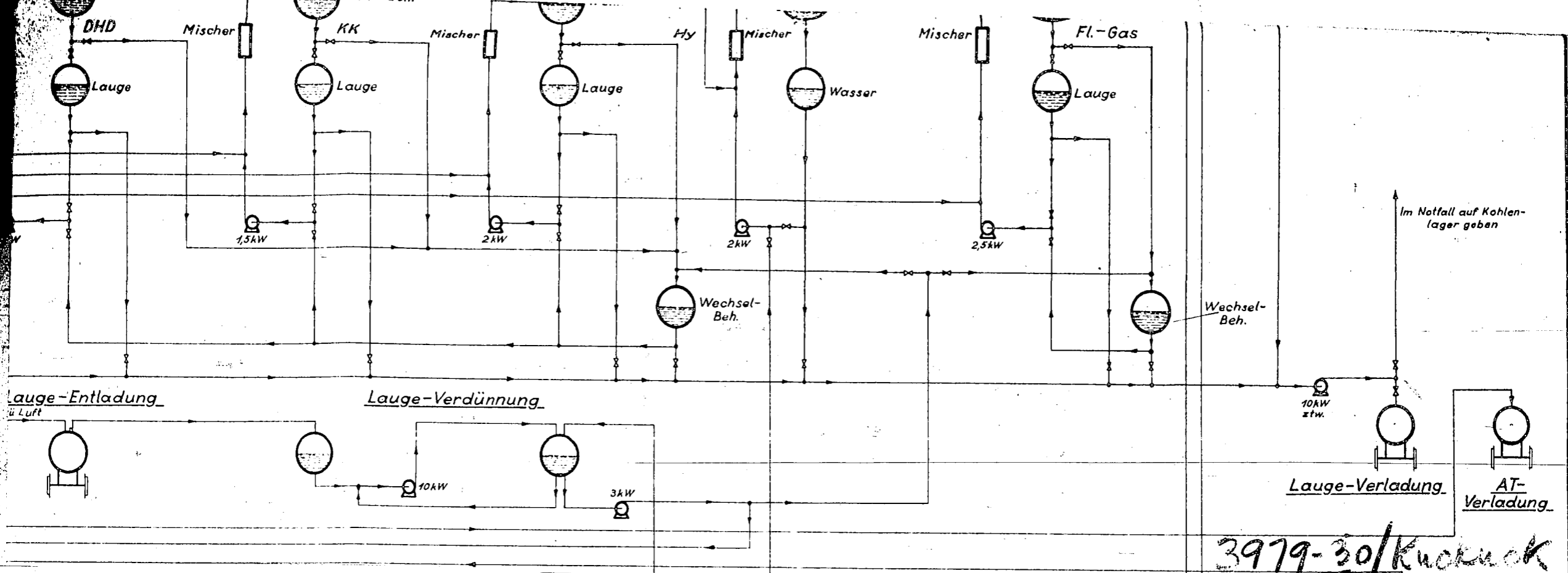
## Lauge-Verladung

## AT-Verladung

Im Notfall auf Kohlenlager geben

3979-30/Kuckuck

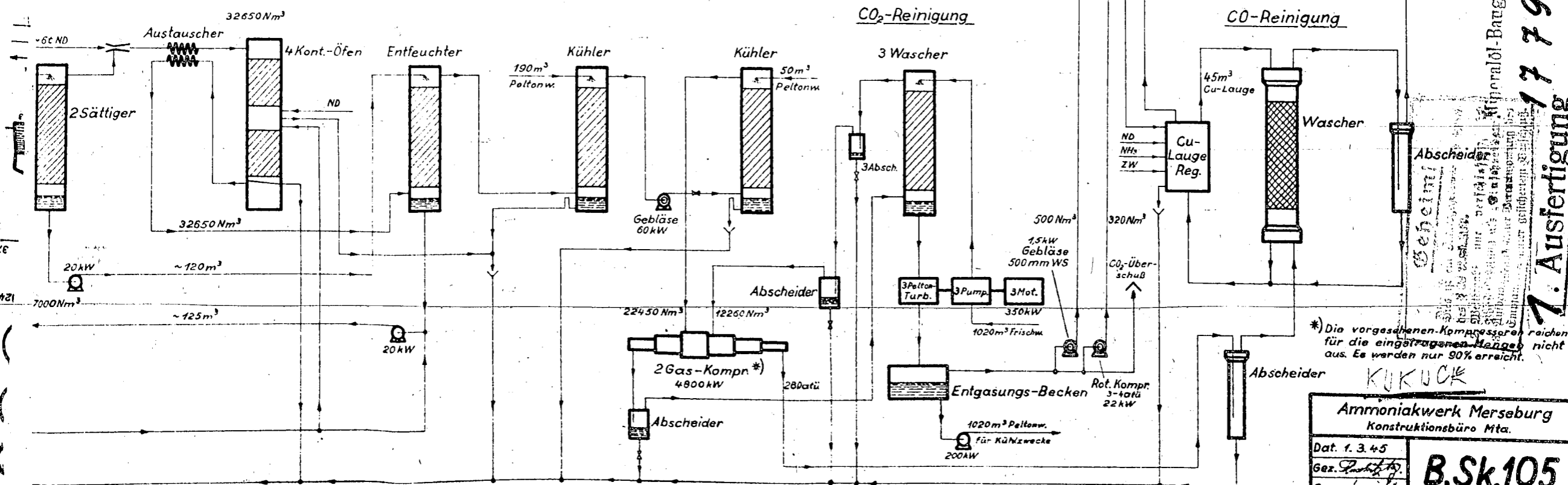




3979-30/Kuckuck

10

# Erzeugung



\* Die vorgeschenen Kompressoren reichen für die eingetragenen Mengen nicht aus. Es werden nur 90% erreicht.

**KUKUCK**

Ammoniakwerk Merseburg  
Konstruktionsbüro Mta.

Dat. 1. 3. 45  
Gez. *[Signature]*  
Gepr. *[Signature]*

**B.Sk.105**

Mineralöl-Baugesellschaft m. b. H.  
 17795-1  
 7. Ausfertigung