

RESTRICTED

INDEX NO. S-03

SHIP AND RELATED TARGETS

PHOTOGRAPHS OF IMPORTANT
JAPANESE NAVAL UNITS AFLOAT

U.S. NAVAL TECHNICAL MISSION TO JAPAN

NS/rk

U. S. NAVAL TECHNICAL MISSION TO JAPAN
CARE OF FLEET POST OFFICE
SAN FRANCISCO, CALIFORNIA

23 January 1946

DECLASSIFIED

From: Chief, Naval Technical Mission to Japan.
To : Chief of Naval Operations.
Subject: Target Report - Photographs of Important Japanese Naval Units Afloat.
Reference: (a)"Intelligence Targets Japan" (DNI) of 4 Sept. 1945.

1. Subject report, dealing with Target S-03 of Fascicle S-1 of reference (a), is submitted herewith.

2. The investigation of the target and the target report were accomplished by Lt.(jg) P.R. Eells, USNR, assisted by J.W. Wiggins, PhOM2c, photographer.



C. G. GRIMES
Captain, USN

RESTRICTED

S-03

**PHOTOGRAPHS OF IMPORTANT
JAPANESE NAVAL UNITS AFLOAT**

**"INTELLIGENCE TARGETS JAPAN" (DNI) OF 4 SEPT. 1945
FASCICLE S-1, TARGET S-03**

JANUARY 1946

U.S. NAVAL TECHNICAL MISSION TO JAPAN

DECLASSIFIED

S-03

SUMMARY

SHIP AND RELATED TARGETS

PHOTOGRAPHS OF IMPORTANT JAPANESE NAVAL UNITS AFLOAT

The enclosed photographs include those ships listed in Supplementary List No. 1 Fascicle S-1 of "Intelligence Targets Japan" (DNI) of 4 September 1945, with the following exceptions:

1. CM CHIKUZEN: Apparently no such ship exists. "CHIKUZEN" is the name of an ancient Japanese province or prefecture and as such, in naval terminology, would have only a major ship named after it. There is a merchant ship, CHIKUZEN MARU, (1150 gross tons) which is classed as a fish carrier. It is possible that this fish carrier was observed operating in mined waters and mistakenly identified as a minelayer.
2. SS I-176 Class: The Japanese designate this class of submarine as the "174" class and include numbers 174-185. All submarines of this class had been sunk in combat by November 1944.
3. Midget Submarines: Complete coverage of this subject is afforded in NavTechJap Reports, "Japanese Suicide Craft", Index No. S-02 and "Characteristics of Japanese Naval Vessels, Article 7 - Submarines - Supplement II", Index No. S-01-7.
4. CA MYOKO and CA TAKAO, both in the SINGAPORE area, were not included in this report because of their inaccessibility.

It should be noted that the designation "CV HAYATAKA (JUNYO) class" should be corrected to "JUNYO class". The Japanese designated the ship and the class "JUNYO" and did not recognize the U.S. use of "HAYATAKA". It seems that this misinterpretation arose from the fact that the characters for JUNYO (軍鷹) can also be read HAYATAKA.

U.S. Navy designation, "APD NO. 1 class" and "LSM NO. 101 class", are named by the Japanese "1st CLASS TRANSPORT" and "2nd CLASS TRANSPORT", respectively.

The above are the only exceptions or corrections noted.

DECLASSIFIED

TABLE OF CONTENTS

Summary	Page 1
Introduction	Page 3
Illustrations	
CV JUNYO	Page 5
CV KATSURAGI	Page 8
CV KASAGI	Page 11
CVL IBUKI	Page 14
CL SAKAWA	Page 16
DD SUZUTSUKI (TERATSUKI Class)	Page 19
DD KAKI (MATSU Class)	Page 22
Submarines	Page 24
PF SHINNAN (UKURU Class)	Page 40
PF MIYAKE (MIKURA Class)	Page 43
KAIBOKAN No. 1 Class (67)	Page 45
KAIBOKAN No. 2 Class (48)	Page 47
1st Class Transport #9 (APD No. 1 Class)	Page 50
2nd Class Transport #110 (LSM No. 101 Class)	Page 52

DECLASSIFIED

S-03

INTRODUCTION

In photographing the ships from all the required angles, beam view, overhead view, view off bow, view off stern, and detail shots of bridge and armament, some difficulties were encountered. In many cases it was impossible, owing to obstructions, to get into the desired positions to make certain shots. Aerial shots, owing to local weather and landing conditions for small planes, were occasionally impossible. In practically all cases armament had been stripped from the ships before these pictures were made. Many of the instruments and various control machinery were likewise removed from the bridge in the process of demobilization. Consequently, the report may be lacking in certain details concerning objects which unfortunately no longer exist.

The negatives of the photographs contained in this report have been forwarded to the Office of Naval Intelligence, Navy Department, Washington D.C. They will be available there for further study by any interested activity.

BLANK

DECLASSIFIED

S-03

ILLUSTRATIONS

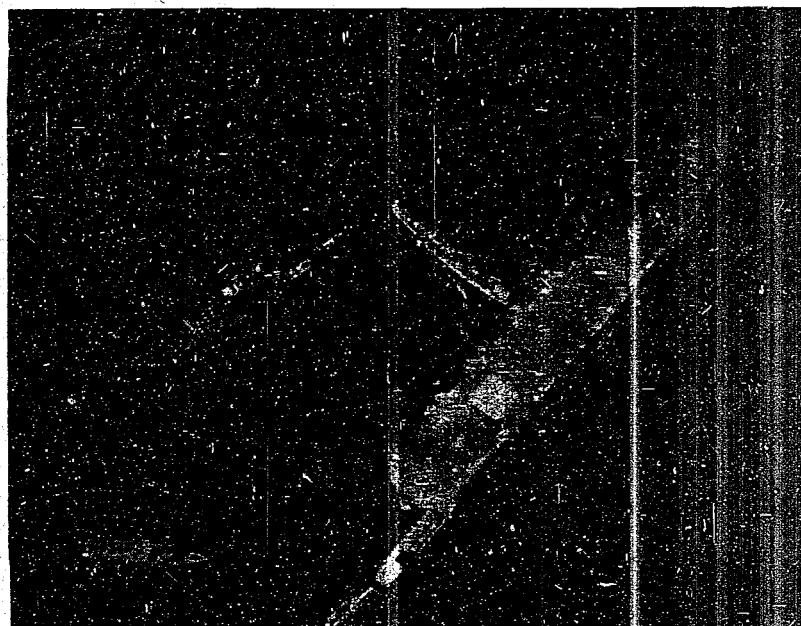


Figure 1
CV JUNYO



Figure 2
CV JUNYO

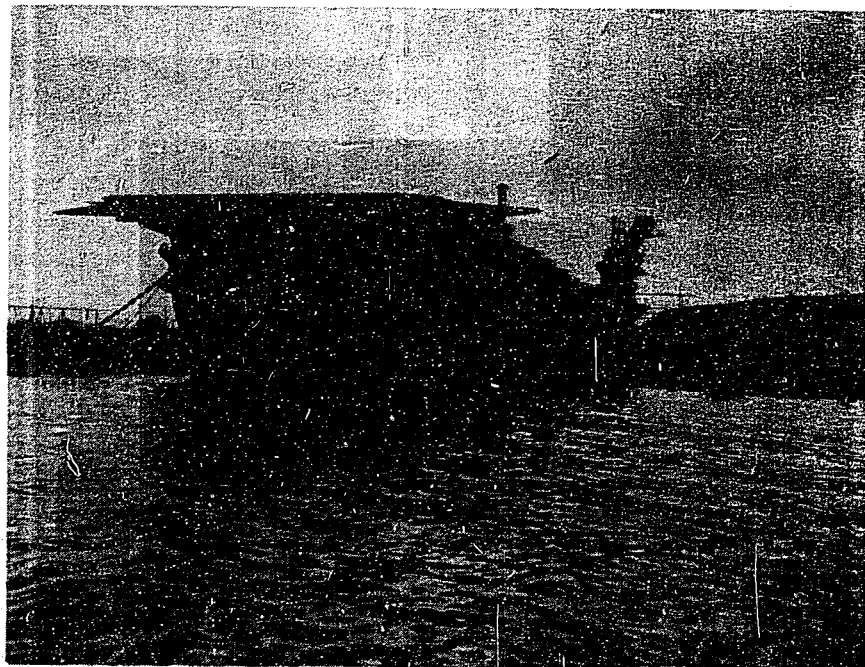


Figure 3
CV JUNYO
Stern view

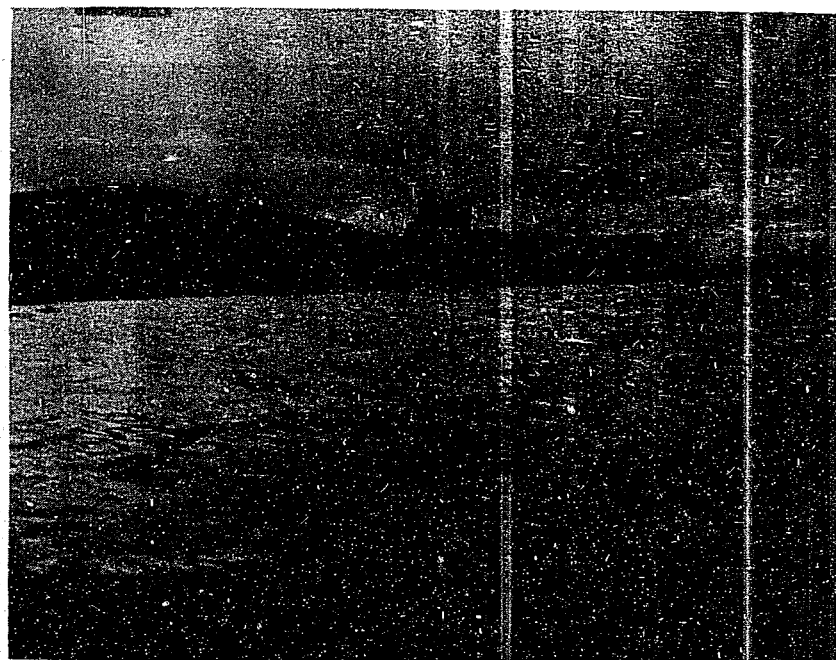


Figure 4
CV JUNYO
Beam

FIED

RESTRICTED

S-03



Figure 5
CV JUNYO

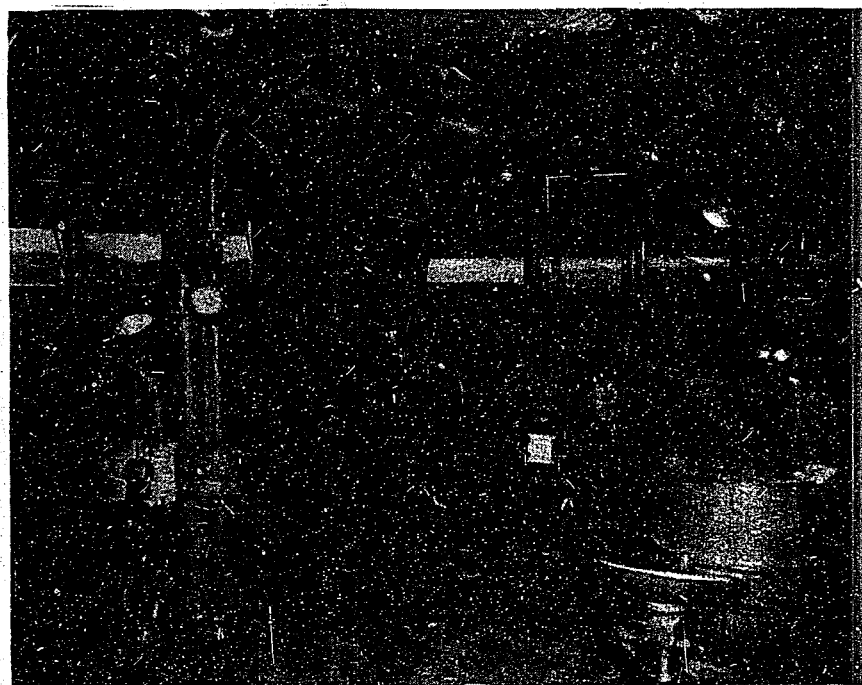


Figure 6
CV JUNYO
Bridge

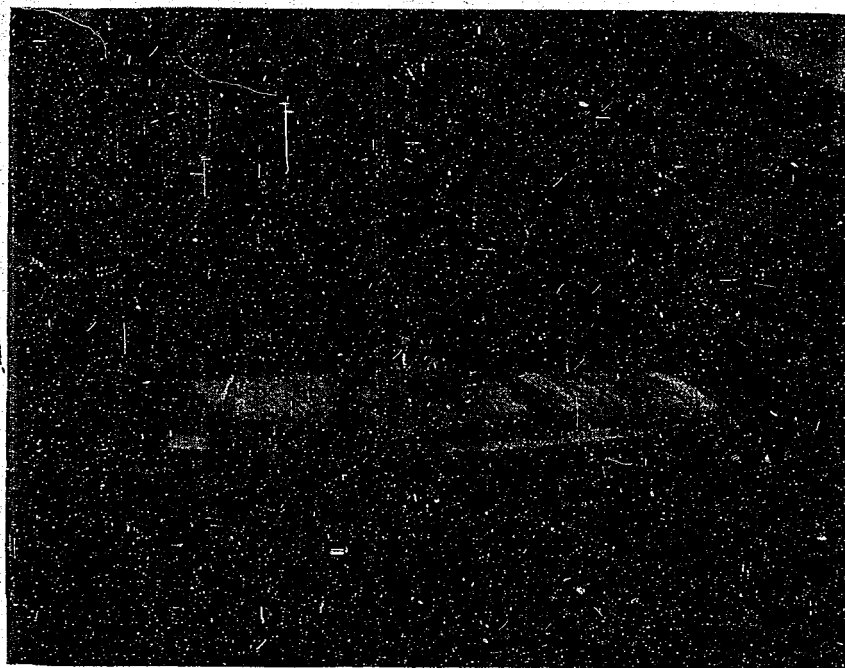


Figure 7
CV KATSURAGI (UNRYU Class)



Figure 8
CV KATSURAGI (UNRYU Class)
Bow view

RESTRICTED

RESTRICTED

S-03



Figure 9
CV KATSURAGI (UNRYU Class)
Starboard beam

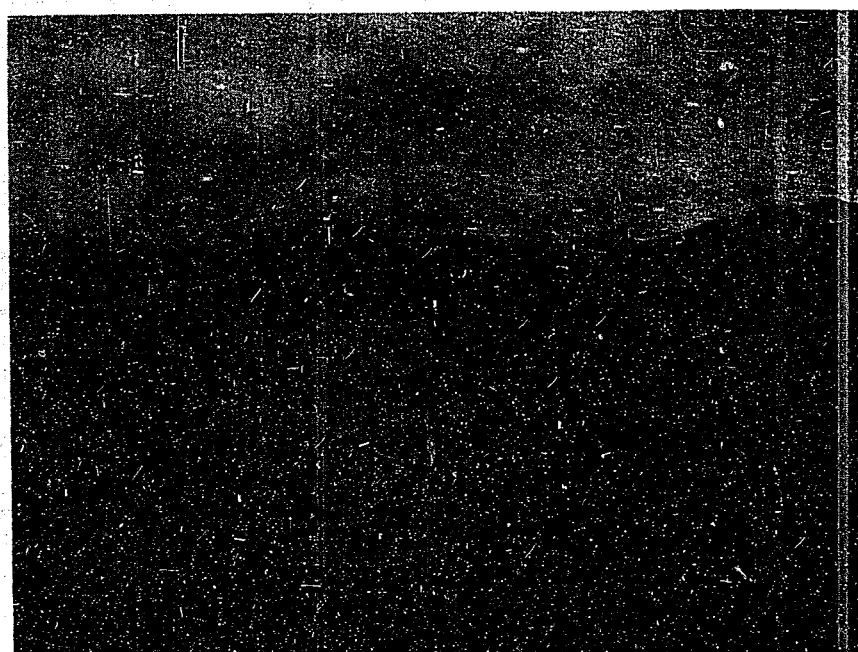


Figure 10
CV KATSURAGI (UNRYU Class)
Port beam



Figure 11
CV KATSURAGI (UNRYU Class)
Stern view



Figure 12
CV KATSURAGI (UNRYU Class)
Bridge



Figure 13
CV KASAGI (UNRYU Class)
Bridge

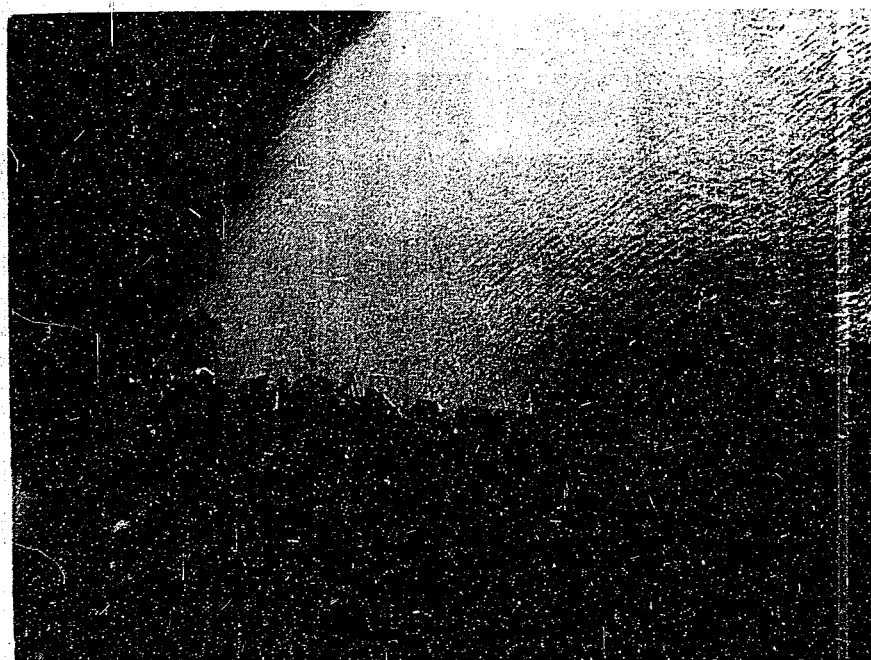


Figure 14
CV KASAGI (UNRYU Class)

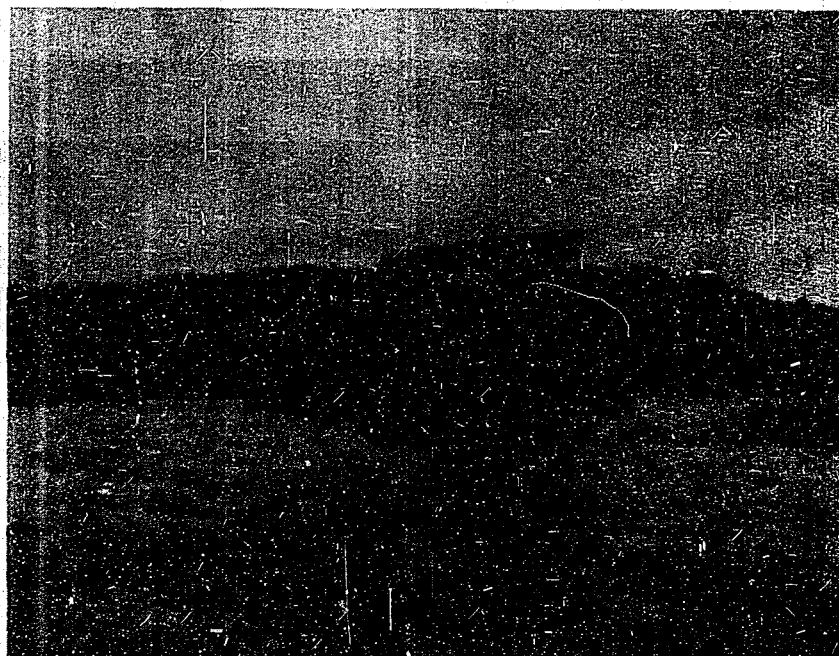


Figure 15
CV KASAGI (UNRYU Class)



Figure 16
CV KASAGI (UNRYU Class)

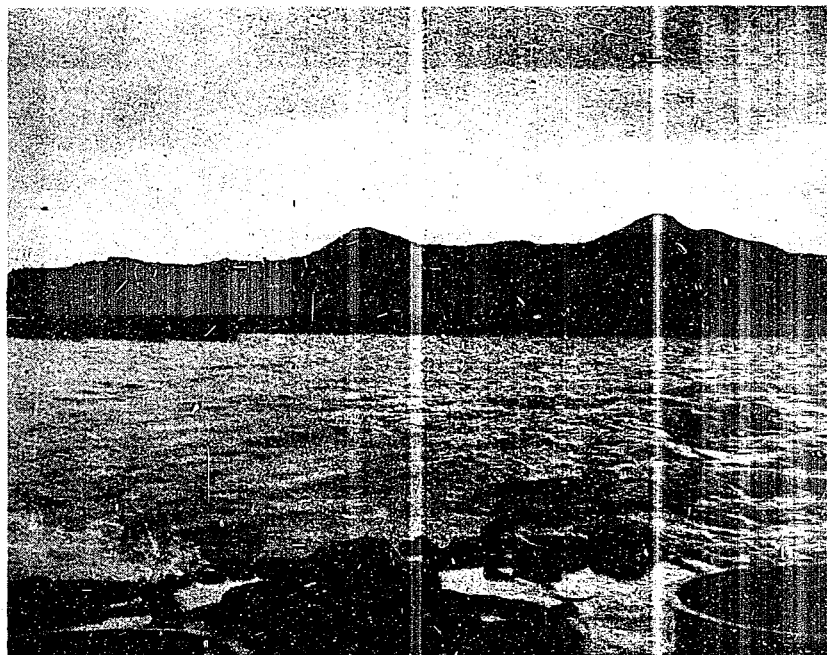


Figure 17
CV KASAGI (UNRYU Class)

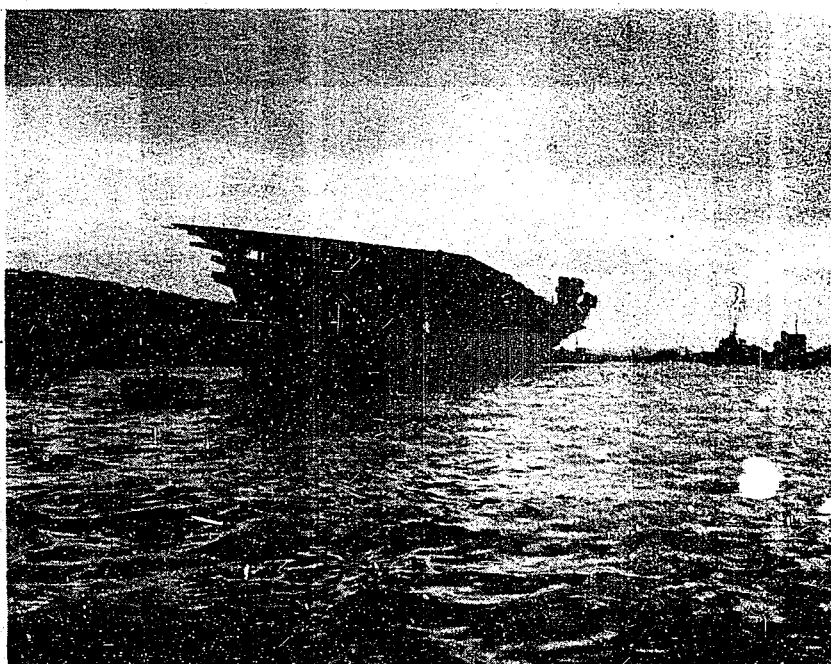


Figure 18
CV KASAGI (UNRYU Class)

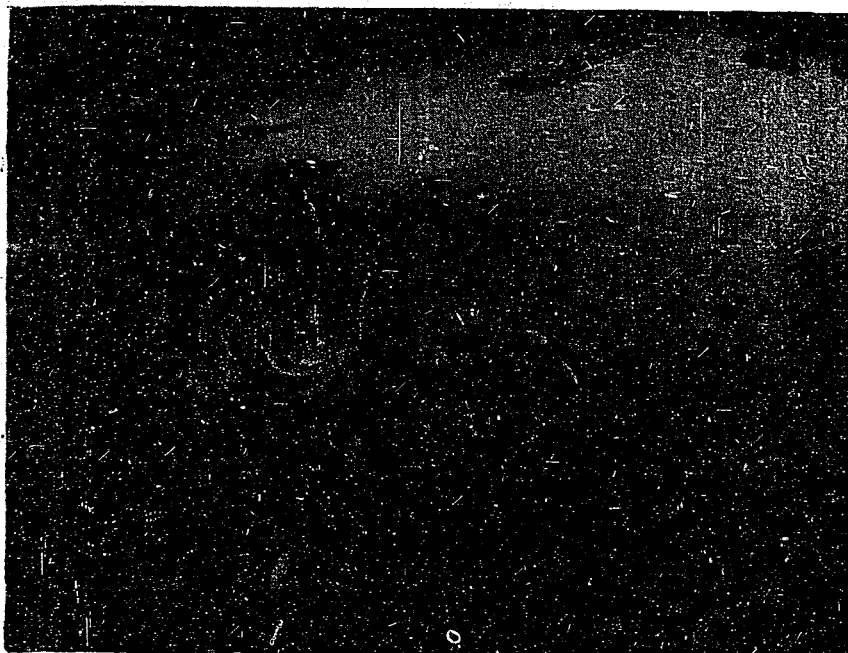


Figure 19
CVL IBUKI

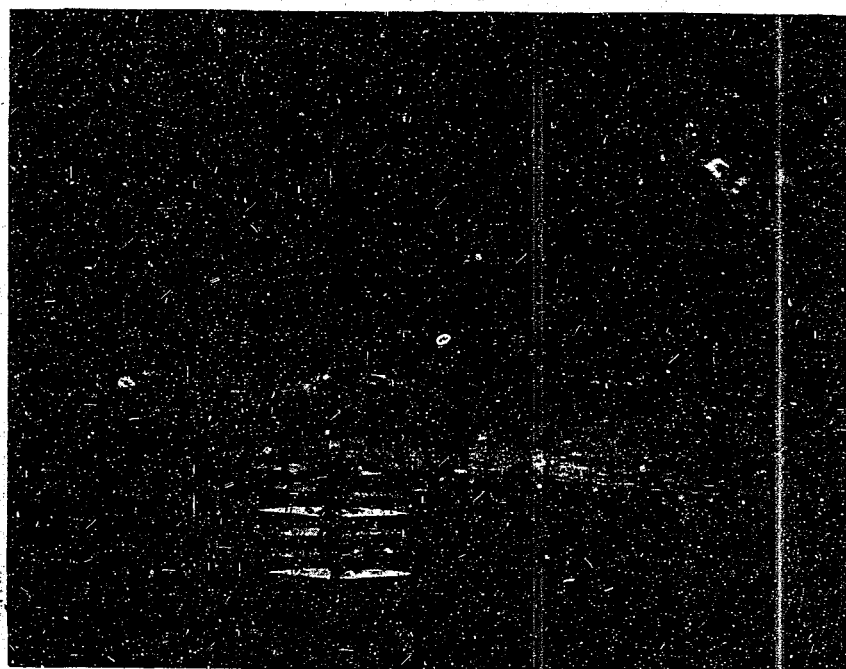


Figure 20
CVL IBUKI

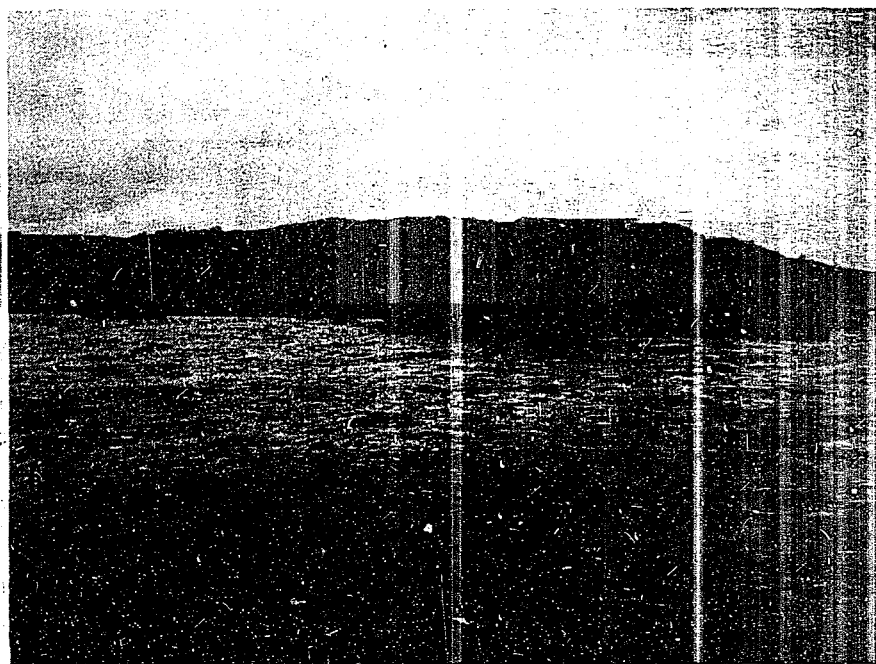


Figure 21
CVL IBUKI
Bow view



Figure 22
CVL IBUKI



Figure 23
CVL IZUMI
Stern view

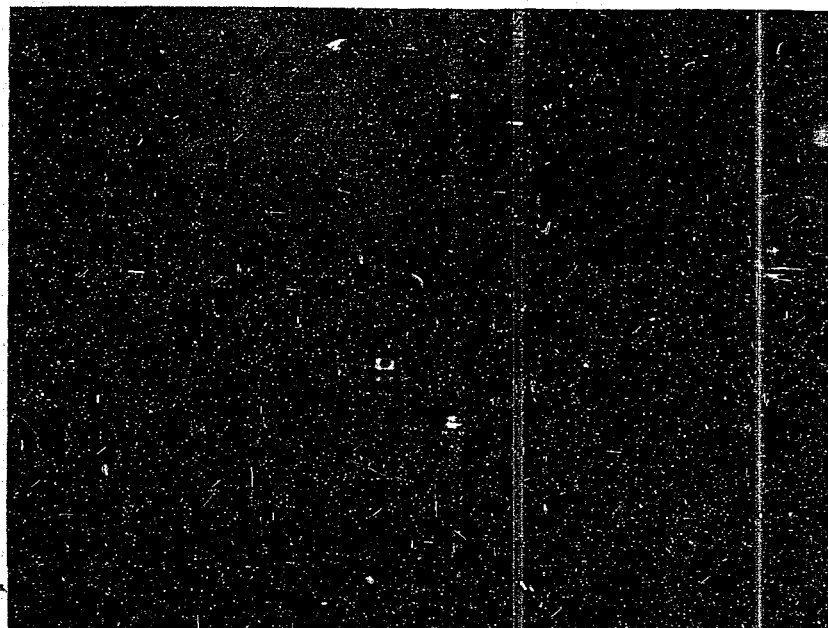


Figure 24
CL SAKAWA (AGATO Class)

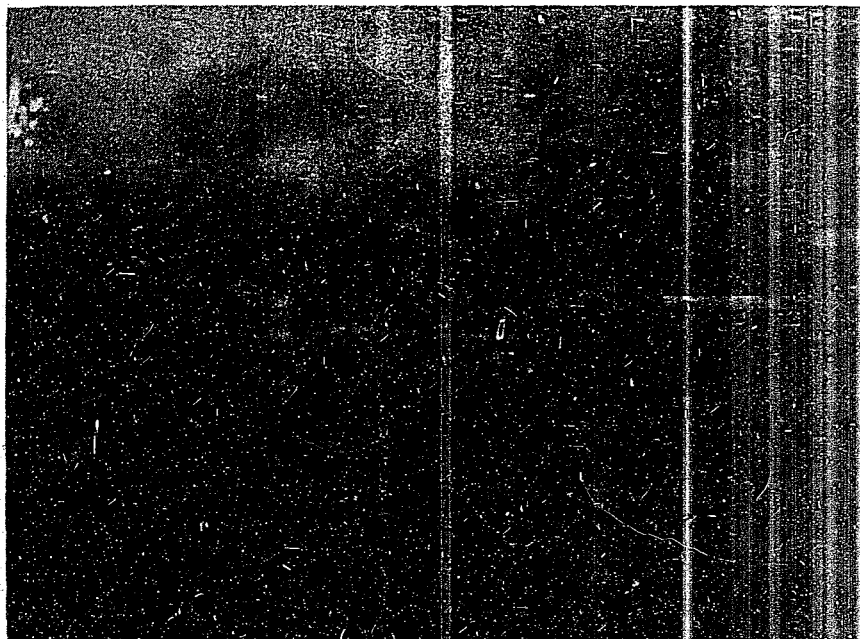


Figure 25
CL SAKAWA (AGANO Class)



Figure 26
CL SAKAWA (AGANO Class)

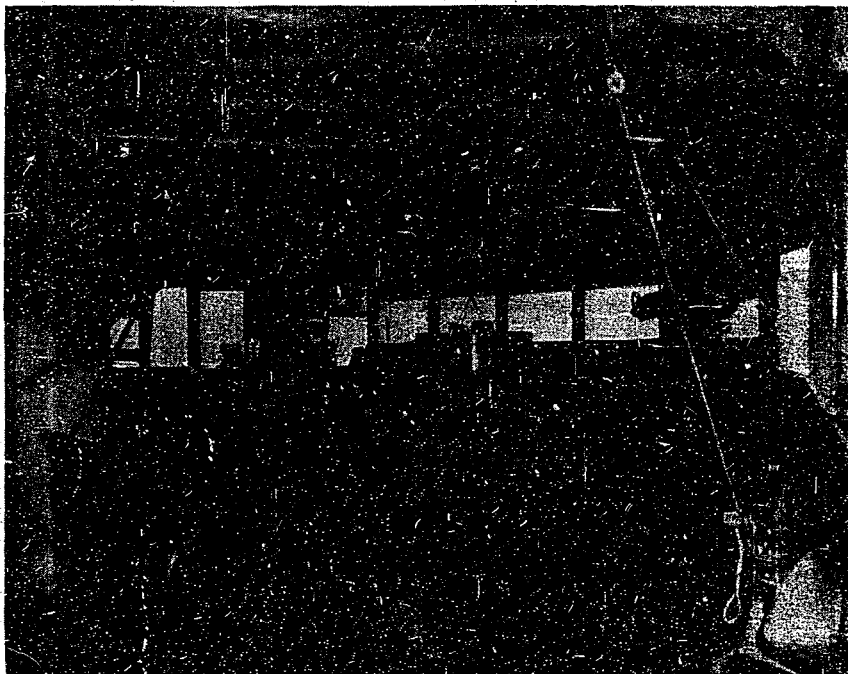


Figure 27
CL SAKAWA (AGANO Class)
Bridge

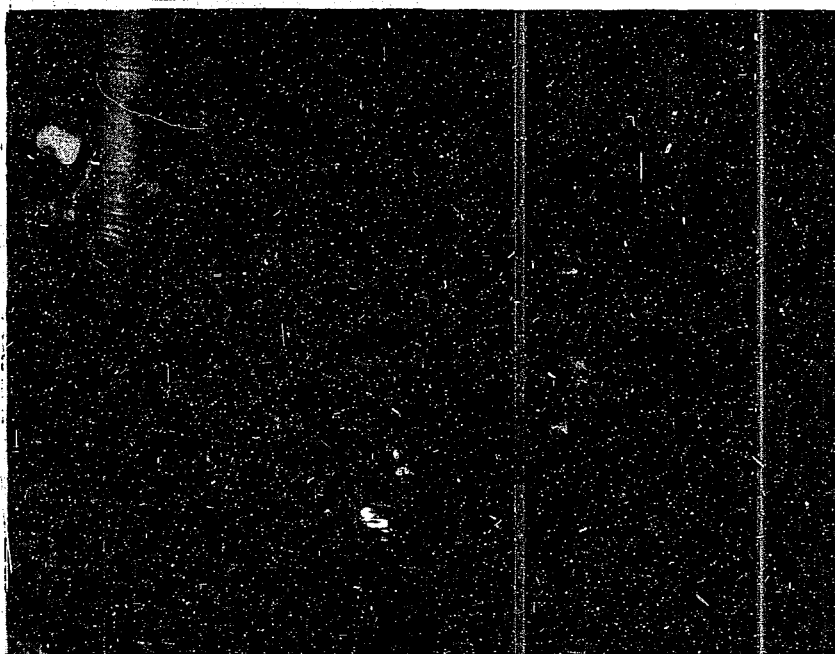


Figure 28
CL SAKAWA (AGANO Class)
Bridge looking aft

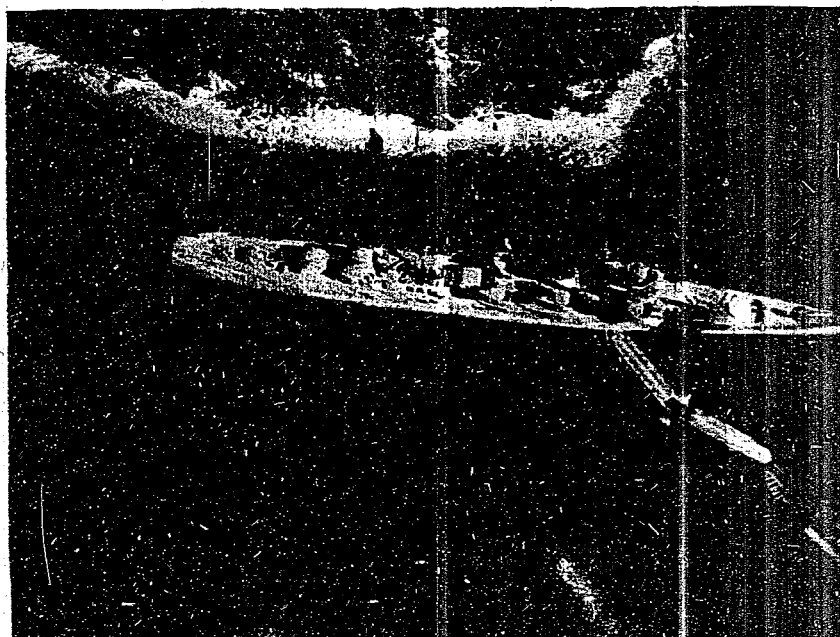


Figure 29
DD SUZUTSUKI (TERATSUKI Class)

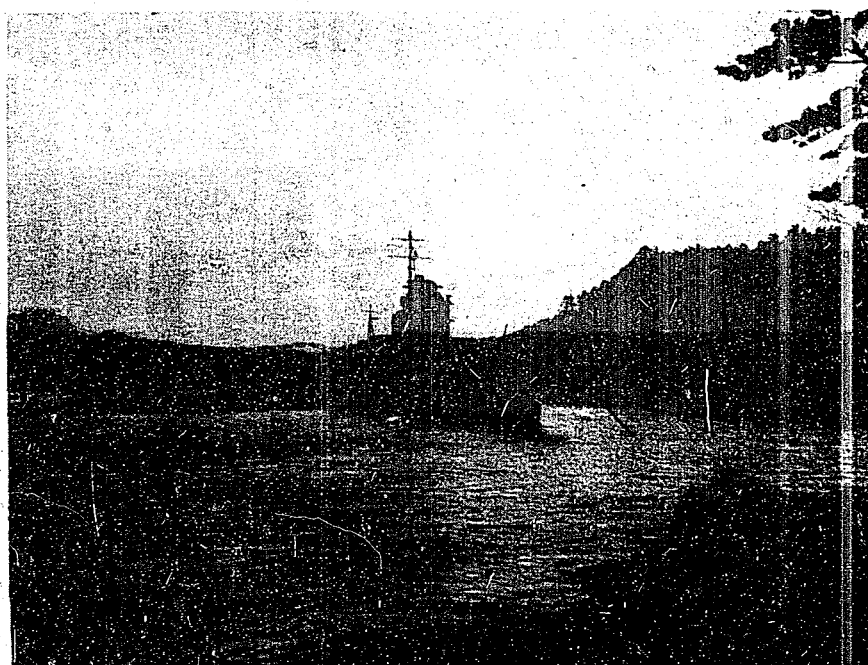


Figure 30
DD SUZUTSUKI (TERATSUKI Class)

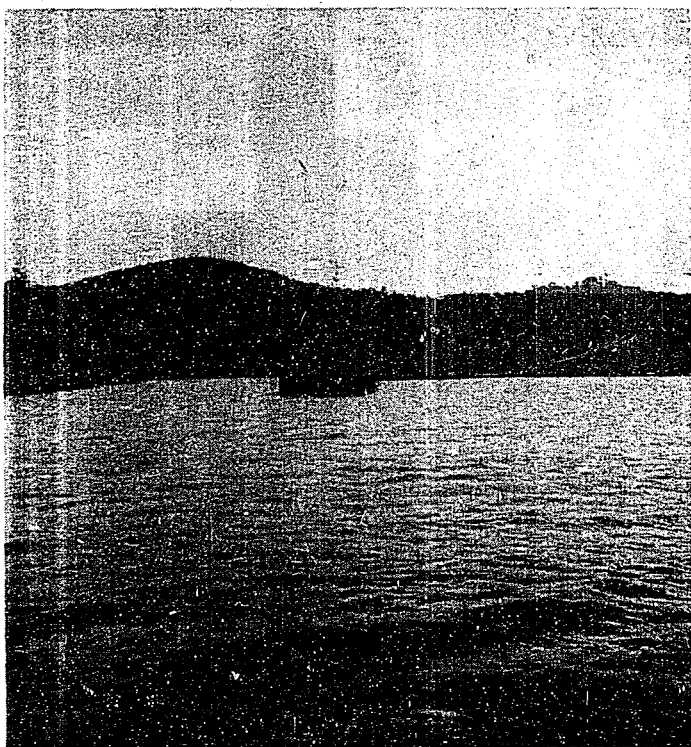


Figure 31
DD SUZUTSUKI (TERATSUKI Class)
Stern view



Figure 32
DD SUZUTSUKI (TERATSUKI Class)



Figure 33
DD SUZUTSUKI (TERATSUKI Class)
Aft guns, looking forward

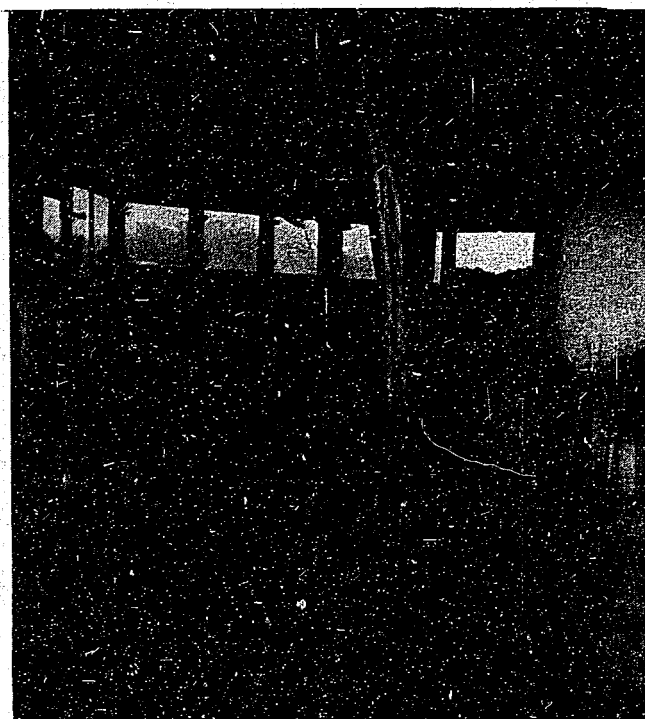


Figure 34
DD SUZUTSUKI (TERATSUKI Class)
Bridge



Figure 35
DD SUZUTSUKI (TERATSUKI Class)
Bridge

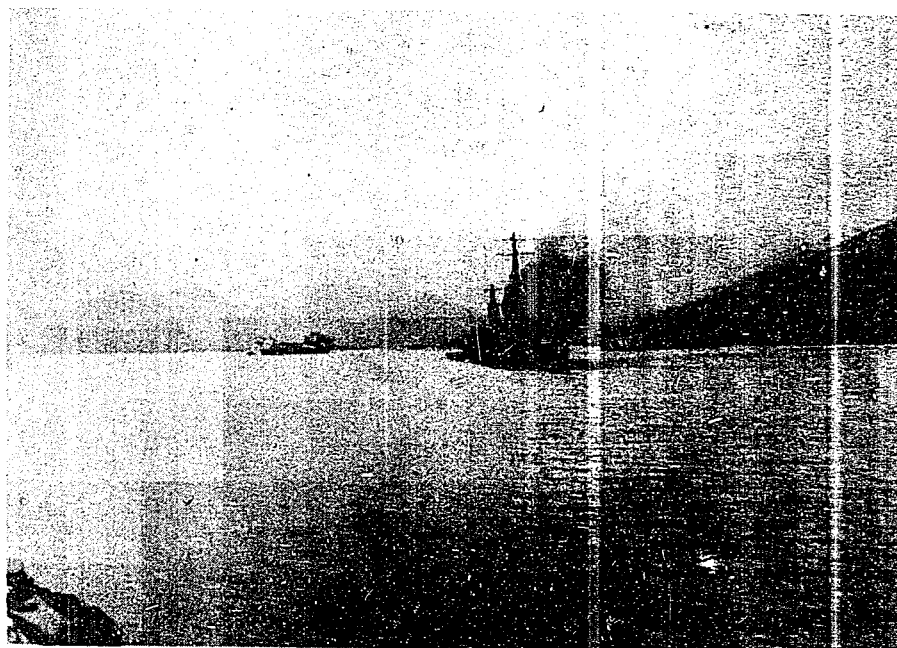


Figure 36
DD KAKI (NATSU Class)

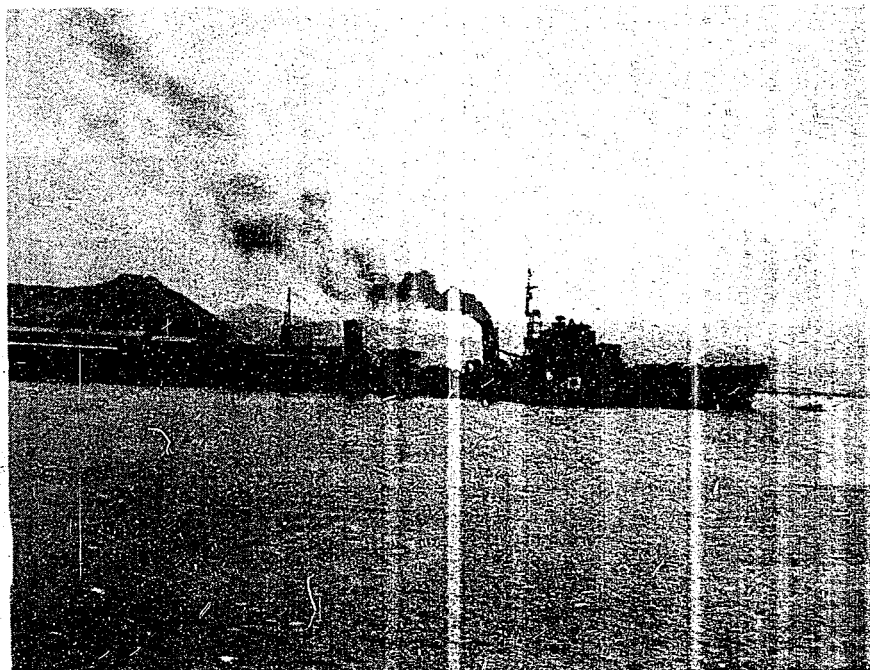


Figure 37
DD KAKI (MATSU Class)

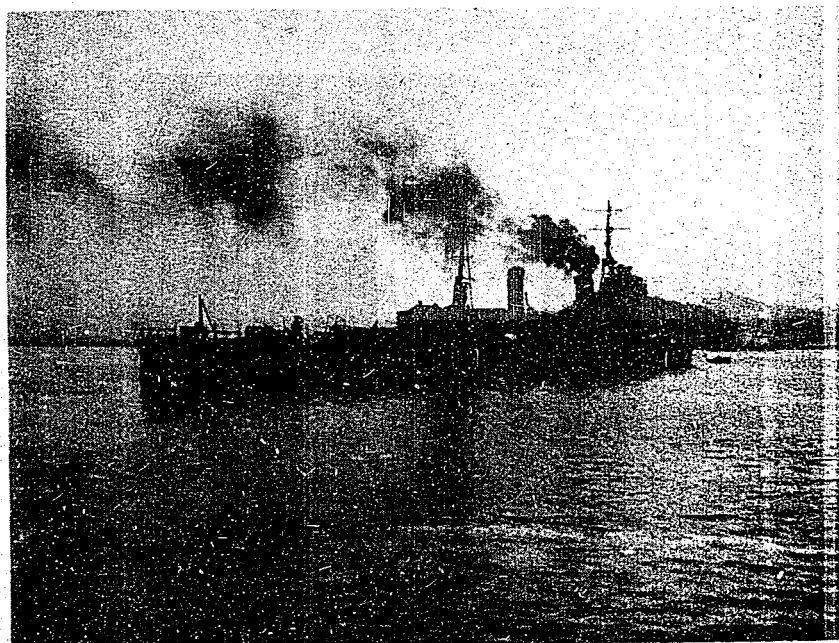


Figure 38
DD KAKI (MATSU Class)

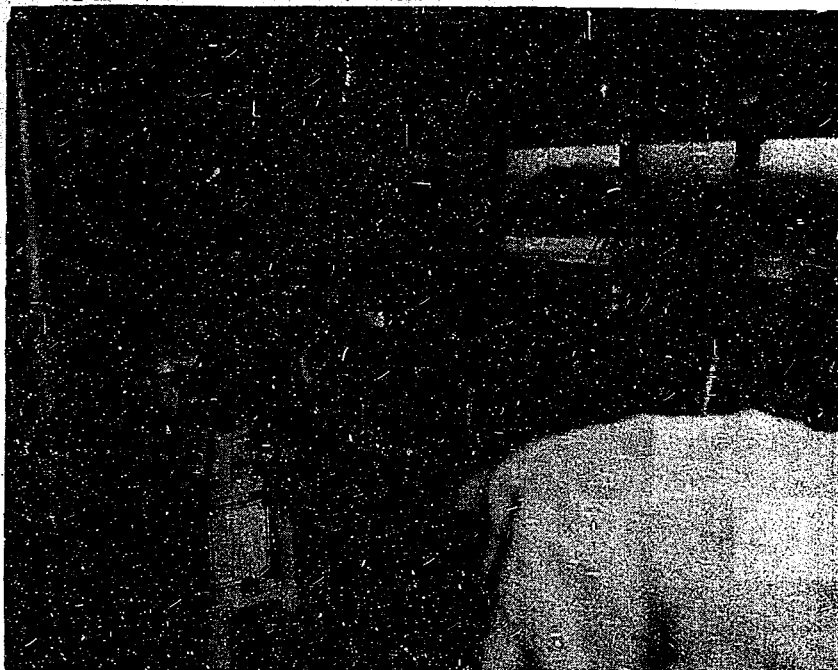


Figure 39
DD KAKI (MATSU Class)
Bridge

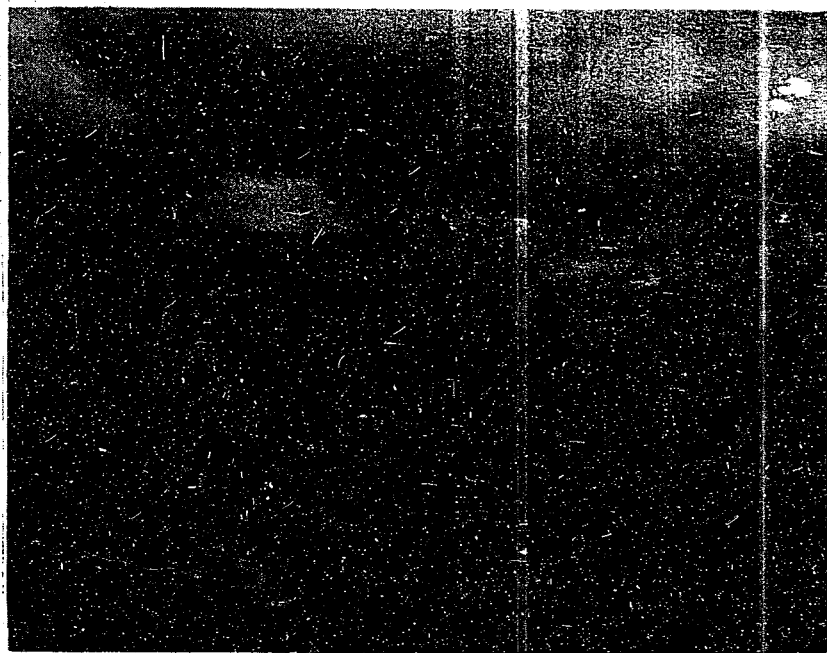


Figure 40
SS I-36 (SS I-15 Class)



Figure 41
SS I-36 (SS I-15 Class)
Stern view

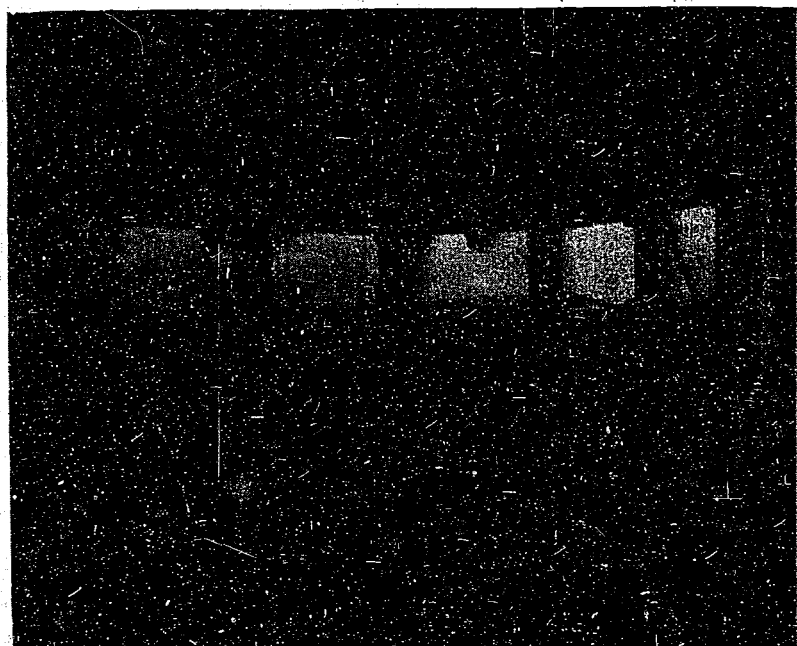


Figure 42
SS I-36 (SS I-15 Class)
Bridge

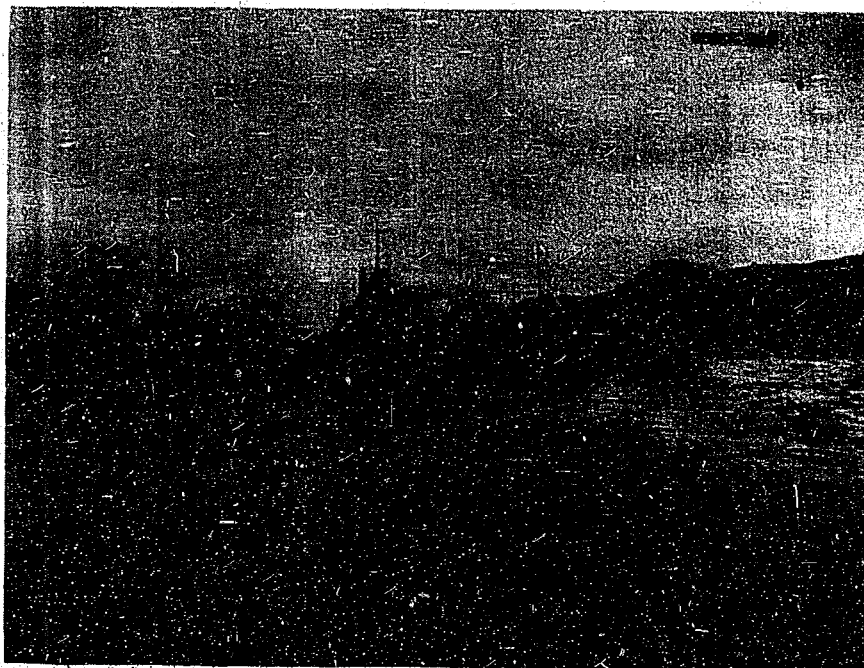


Figure 43

Left to right: SS I-47, SS I-402, SS I-53, SS I-15 Class

Bow views



Figure 44

SS I-53

Bridge



Figure 45

Left to right: SS Ha 201 Class, SS Ha 201 Class,
SS I-54, SS I-301 Class, SS I-361 Class



Figure 46

Left to right: SS Ha 201 Class, SS Ha 201 Class, SS I-361 Class,
SS I-54 (SS I-58) Class, SS Ha 201 Class, SS Ha 201 Class

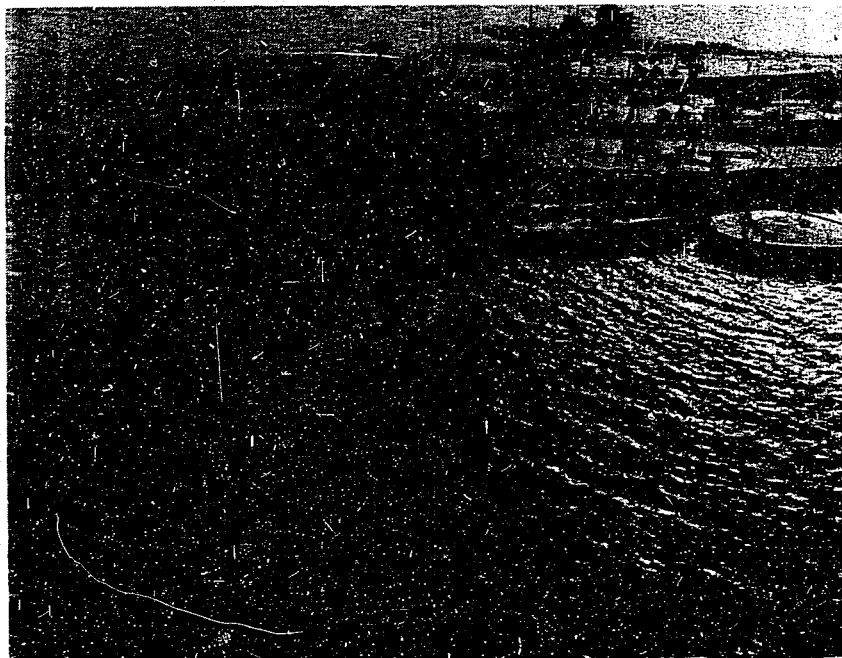


Figure 47

Front to rear: SS Ha-202, SS Ha-201, SS I-58, SS I-367, SS I-366

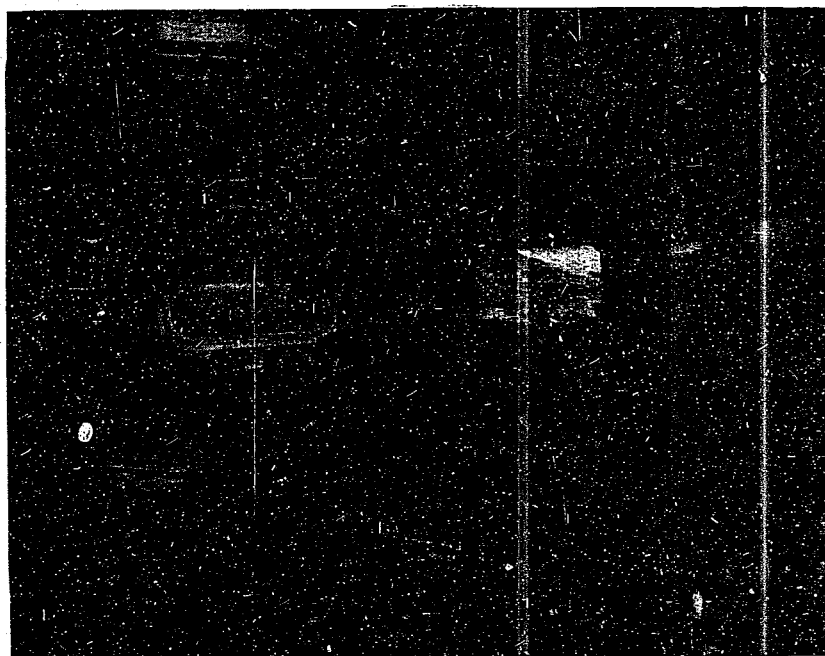


Figure 48

SS I-58
Bridge

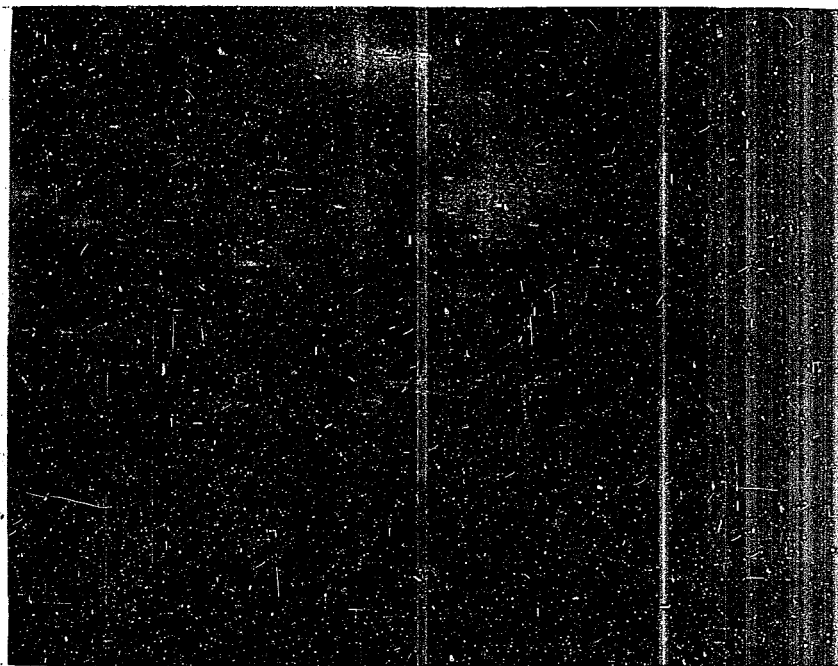


Figure 49
SS I-153 Class
Stern view

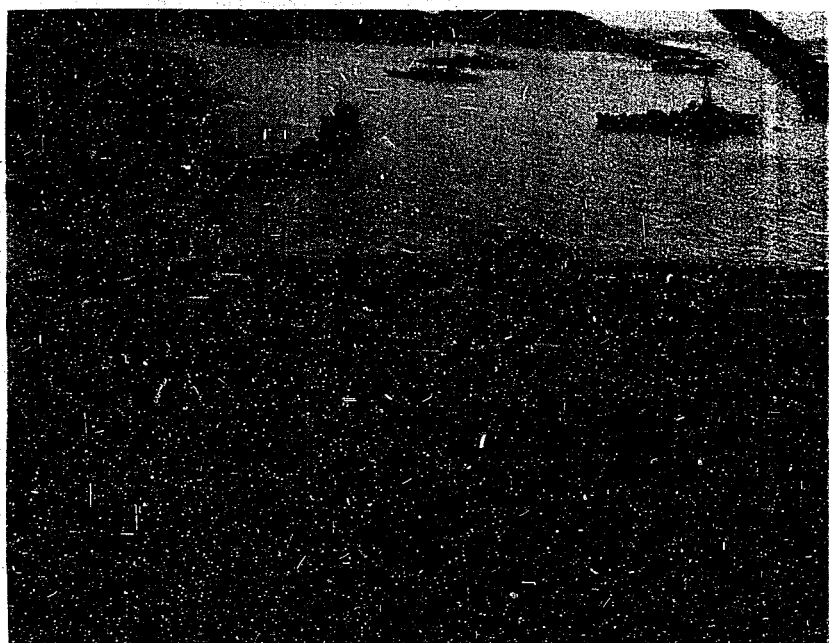


Figure 50
Front to rear: SS I-159, SS I-157, SS I-156



Figure 51
SS I-153 Class
Bow view

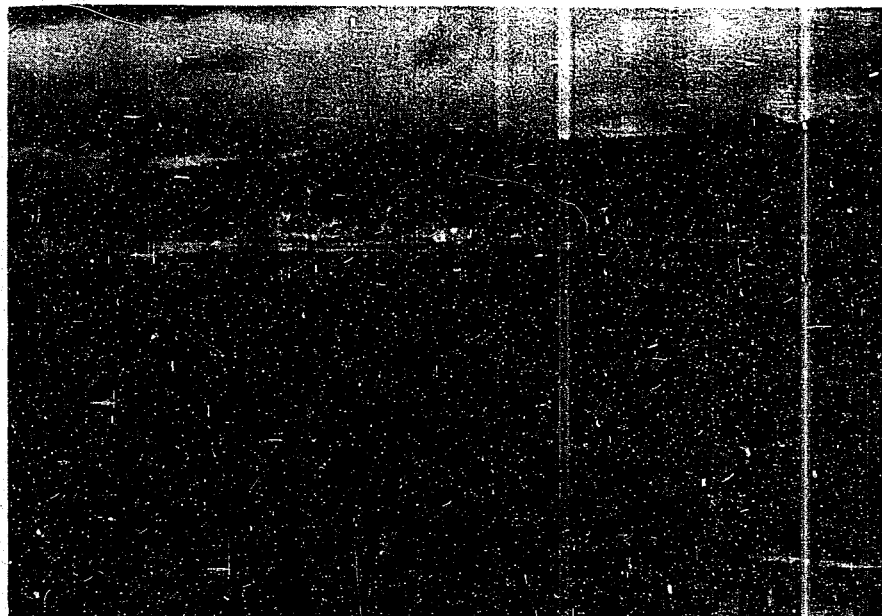


Figure 52
SS I-153 Class

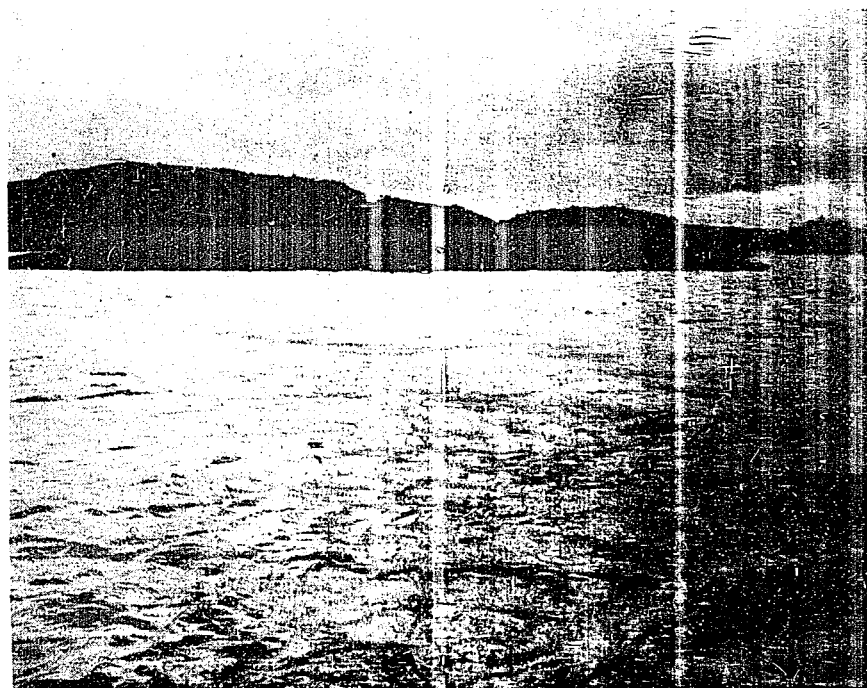


Figure 53
SS I-202, SS I-156



Figure 54
SS I-202, SS I-158

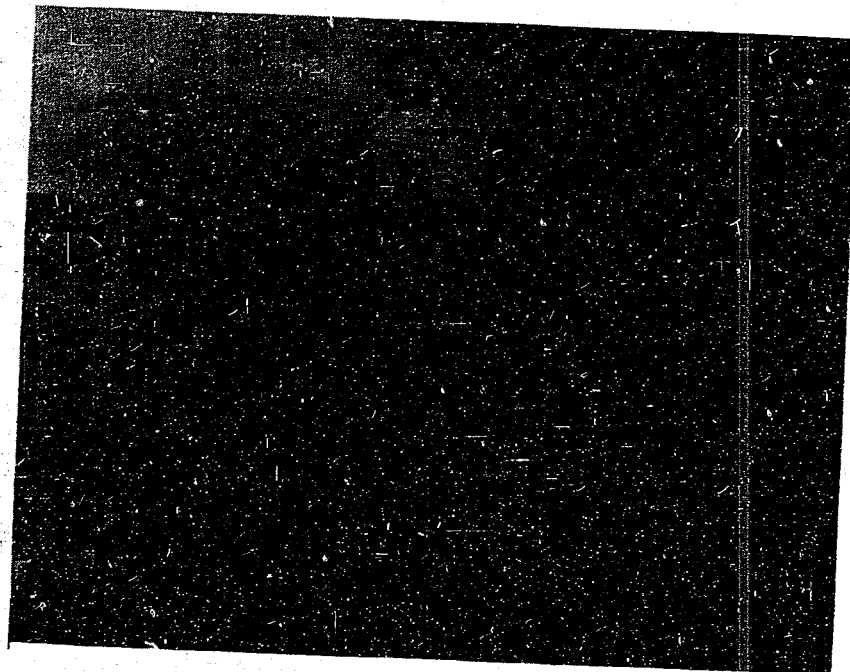


Figure 55
SS I-202 (right), SS I-158



Figure 56
SS I-162
Bridge



Figure 55
SS I-202 (right), SS I-158

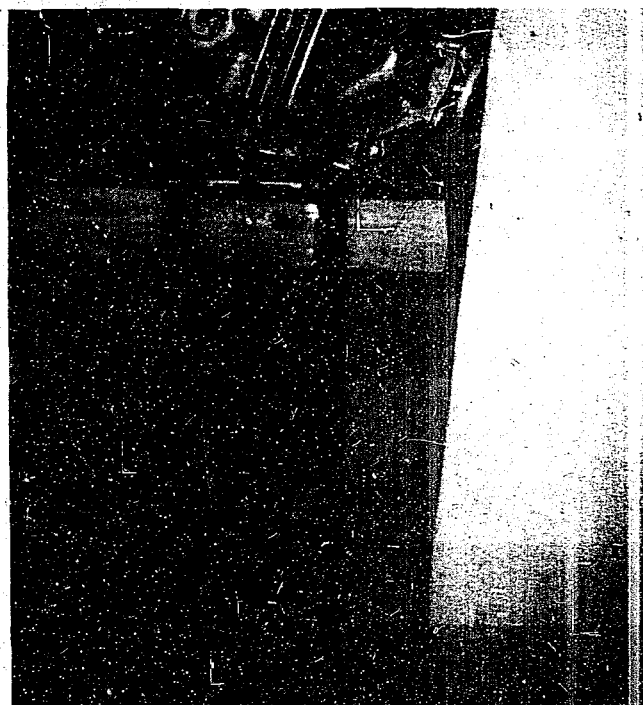


Figure 56
SS I-162
Bridge

RESTRICTED

S-03



Figure 57
SS I-367



Figure 58
SS I-402
Bridge



Figure 59
SS Ha 101 Class



Figure 60.
SS Ha 108
(CVL IBUKI in background)

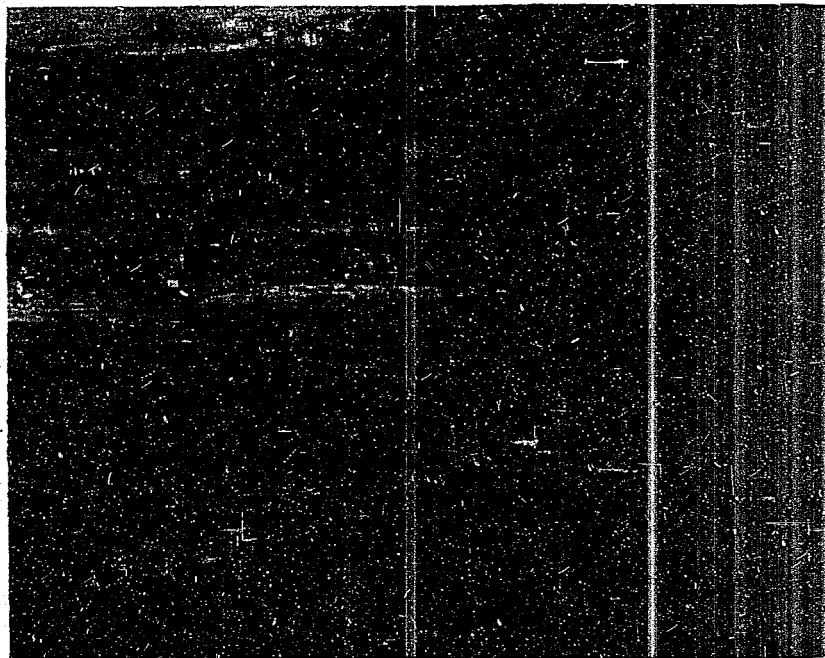


Figure 61
SS Ha 101 Class
CVL IBUKI

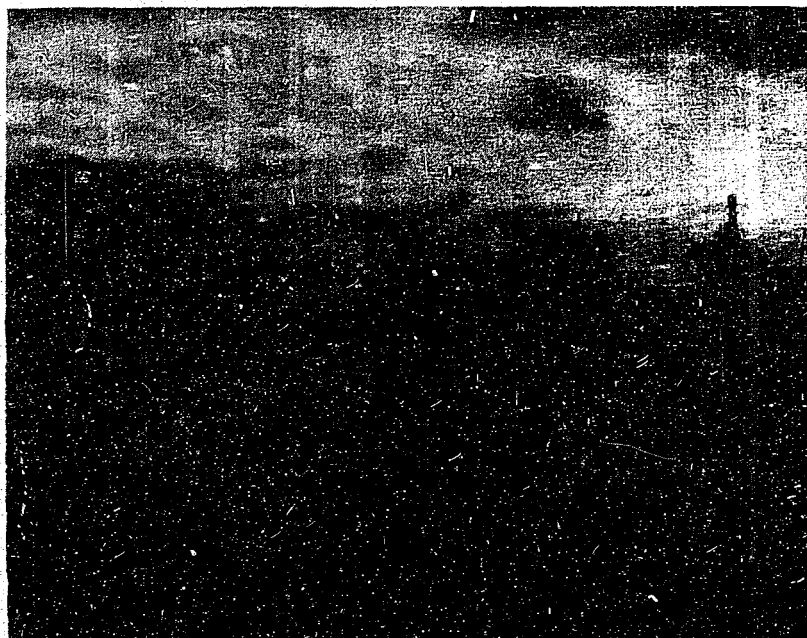


Figure 62
SS Ha 108
Stern view



Figure 63
SS Ha 205 in foreground

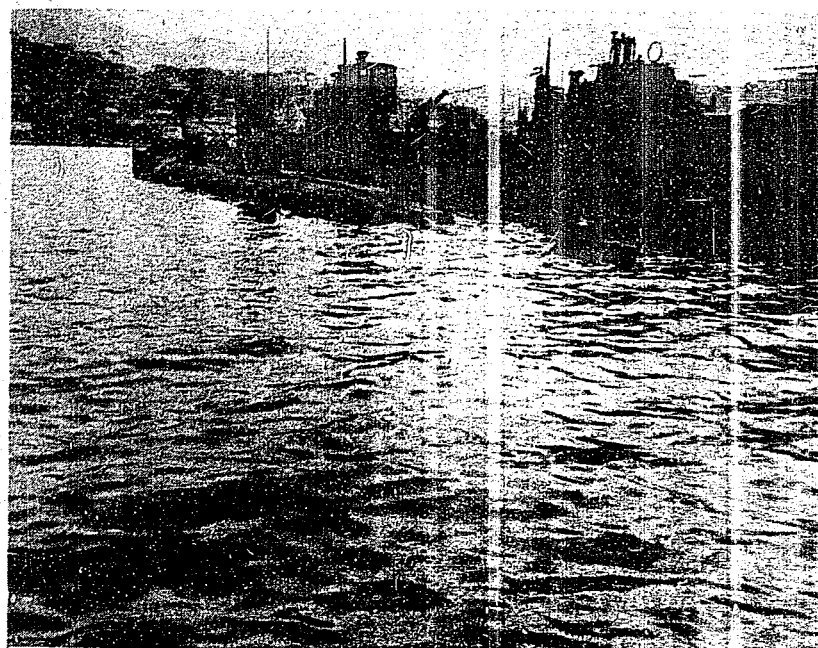


Figure 64
SS Ha 205
Stern view

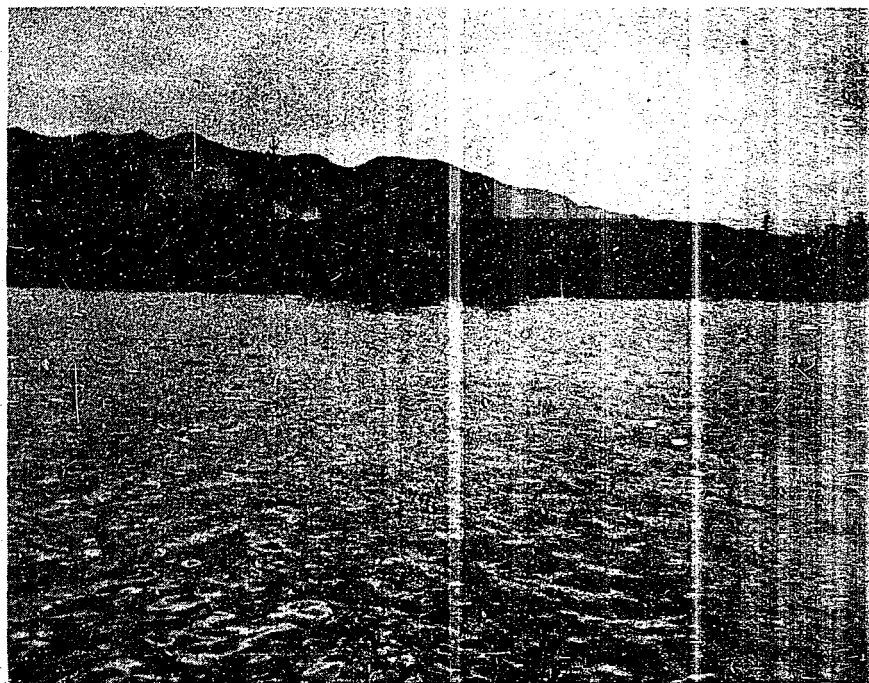


Figure 65
SS Ha 205

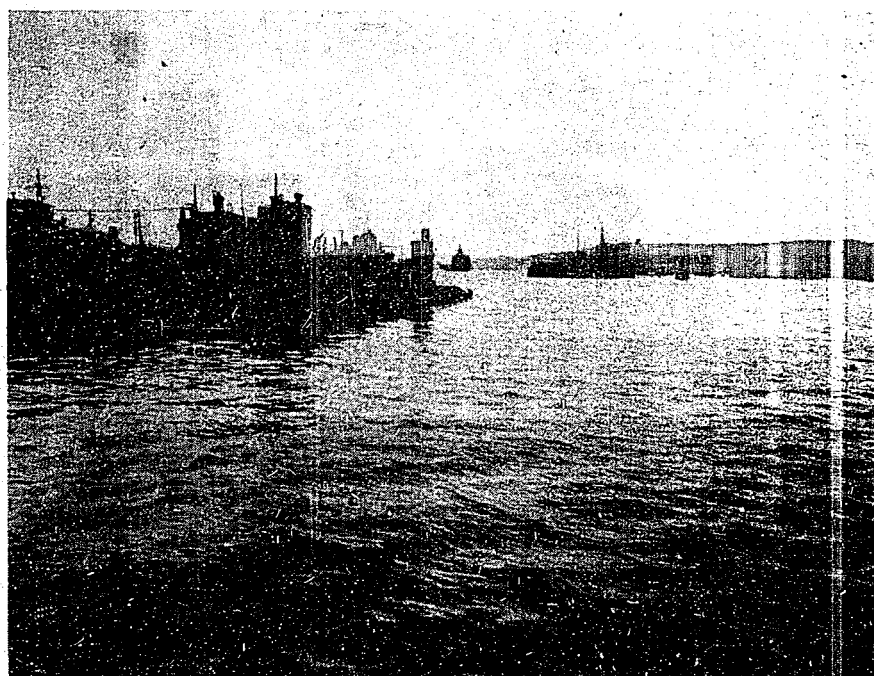


Figure 66
SS Ha 205
Bow view



Figure 67
SS Ha 205
Bow view

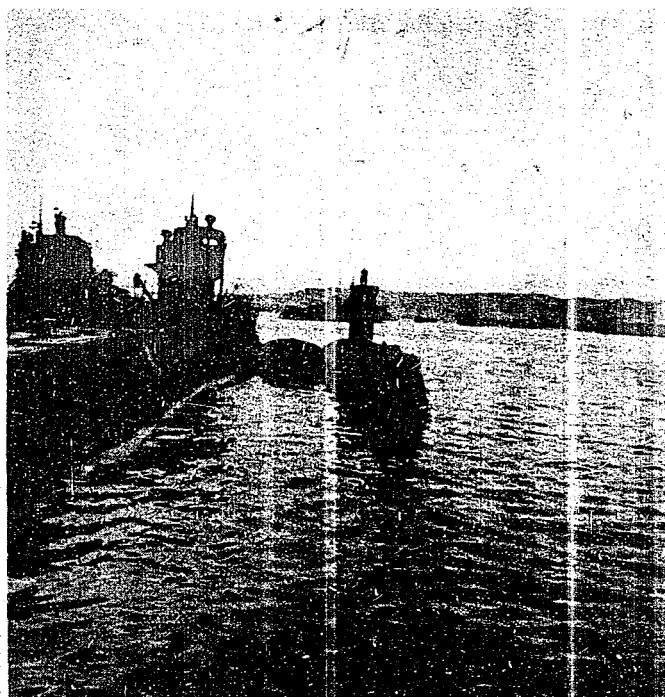


Figure 68
SS RO 500
Bow view

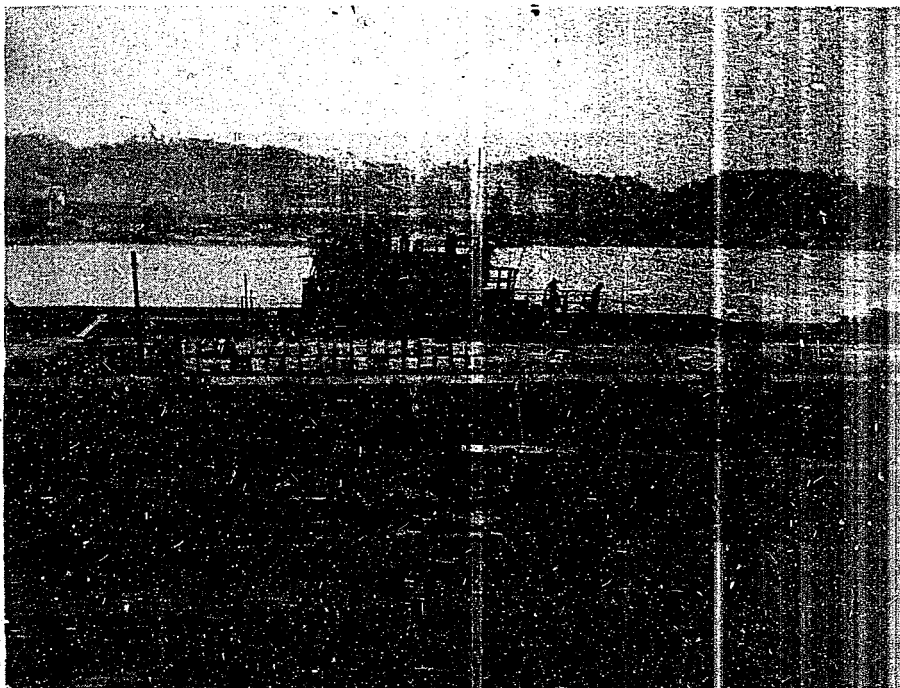


Figure 69
SS RO 500



Figure 70
SS RO 500
Bridge

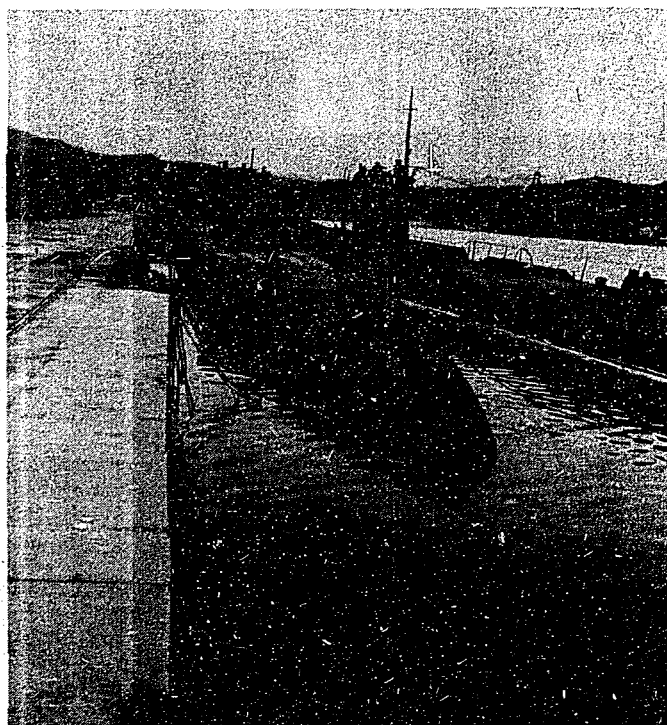


Figure 71
SS RO 500
Stern view



Figure 72
PF SHINNAN (UKURU Class)

RESTRICTED

S-03

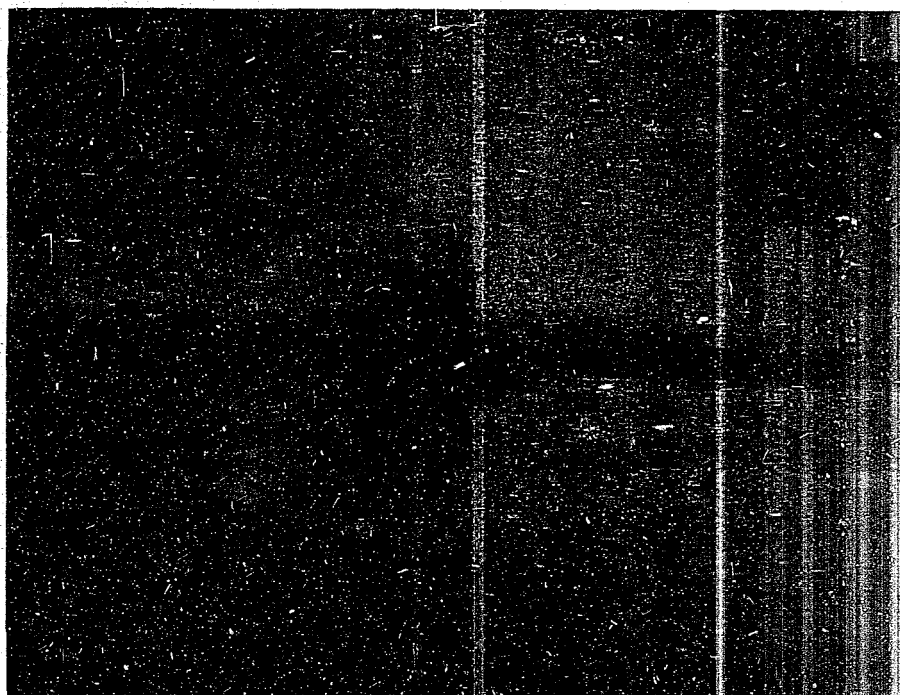


Figure 73
PF SHINNAN (UKURU Class)



Figure 74
PF SHINNAN (UKURU Class)

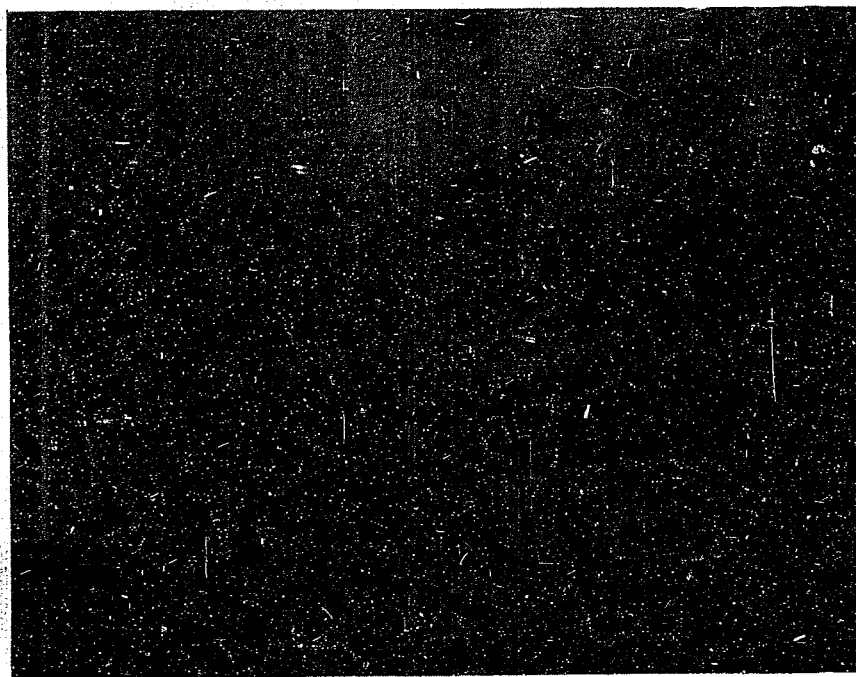


Figure 75
PF SHINNAN (UKURU Class)

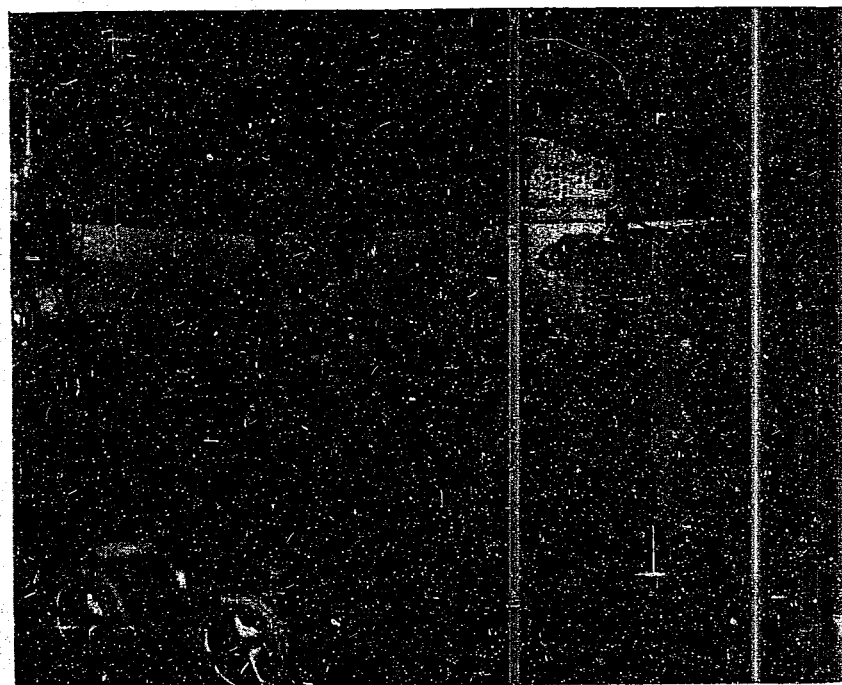


Figure 76
PF SHINNAN (UKURU Class)
Bridge

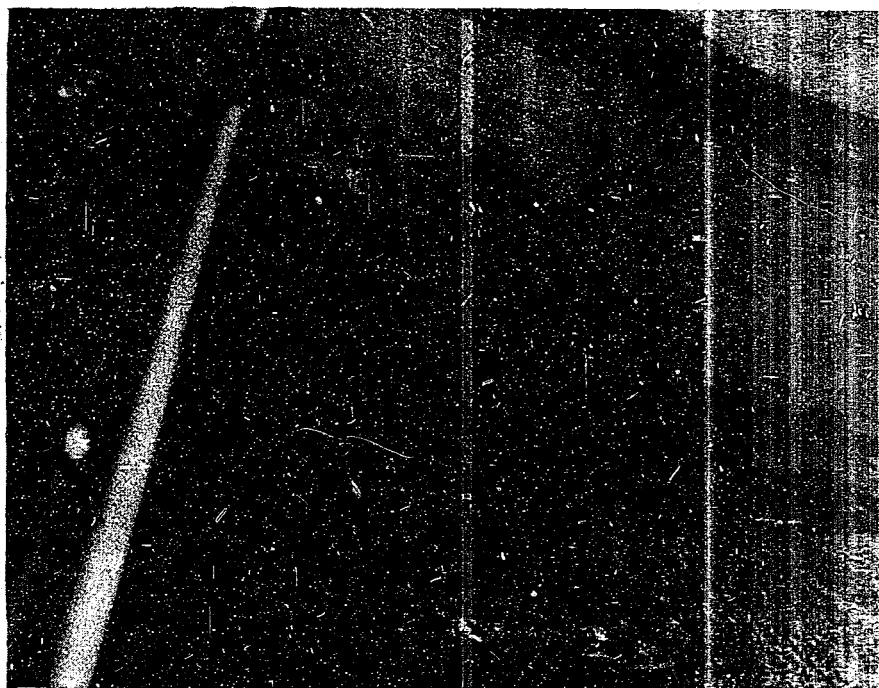


Figure 77
PF MIYAKE (MIKURA Class)
(Lower center - third ship from the bottom)



Figure 78
PF MIYAKE (MIKURA Class)

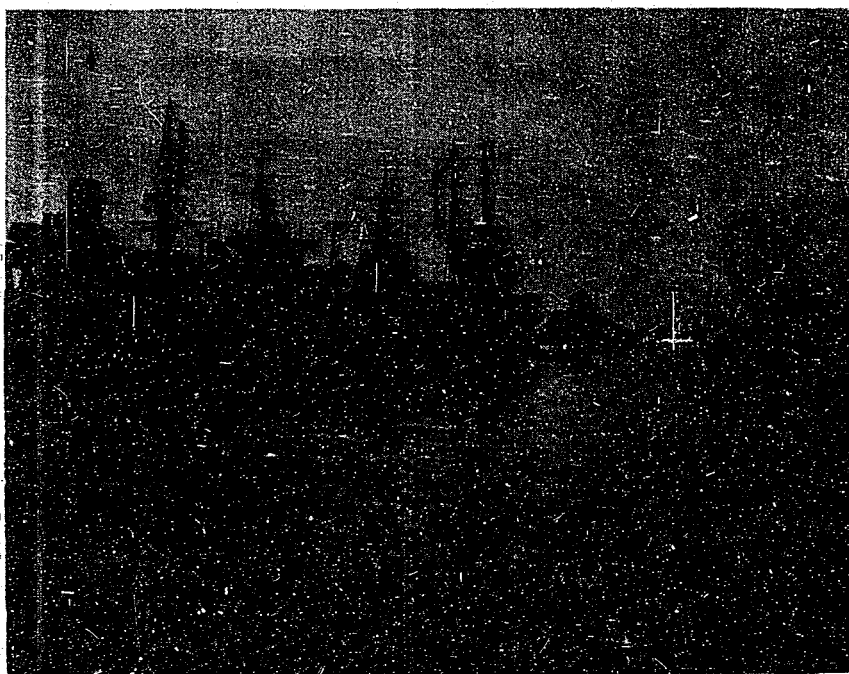


Figure 79
PF MIYAKE (MIKURA Class)
Stern view

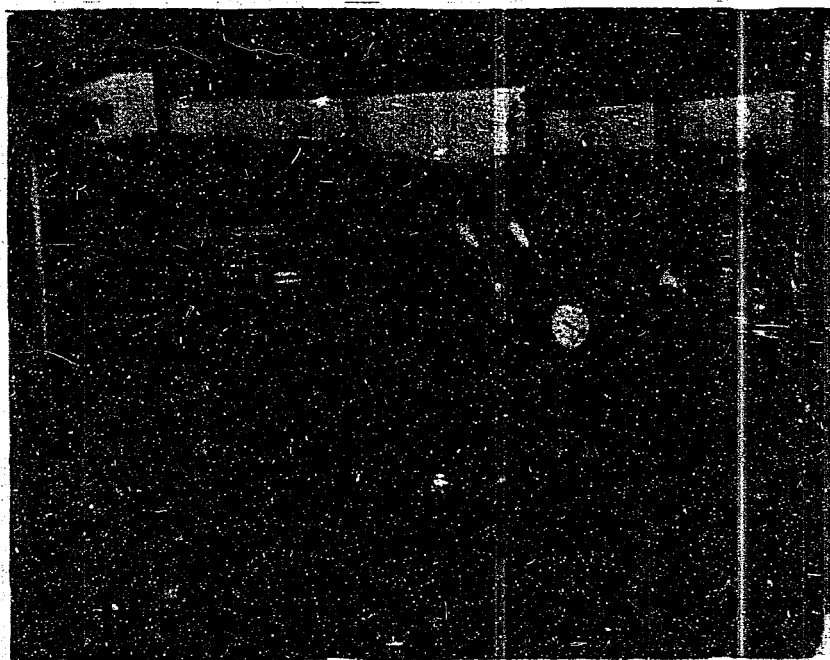


Figure 80
PF MIYAKE
Bridge

RESTRICTED

S-03

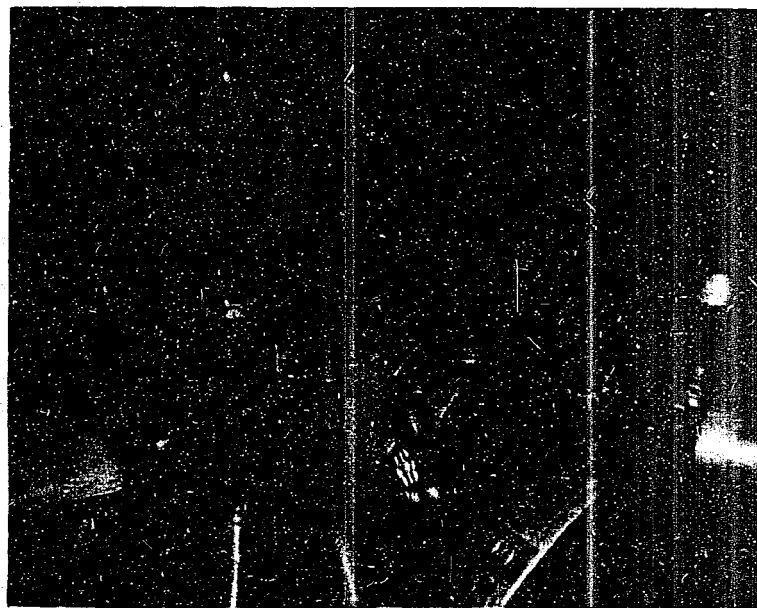


Figure 81
PF MIYAKE
Bridge (looking aft)



Figure 82
KAIBORAN #67
Bow view

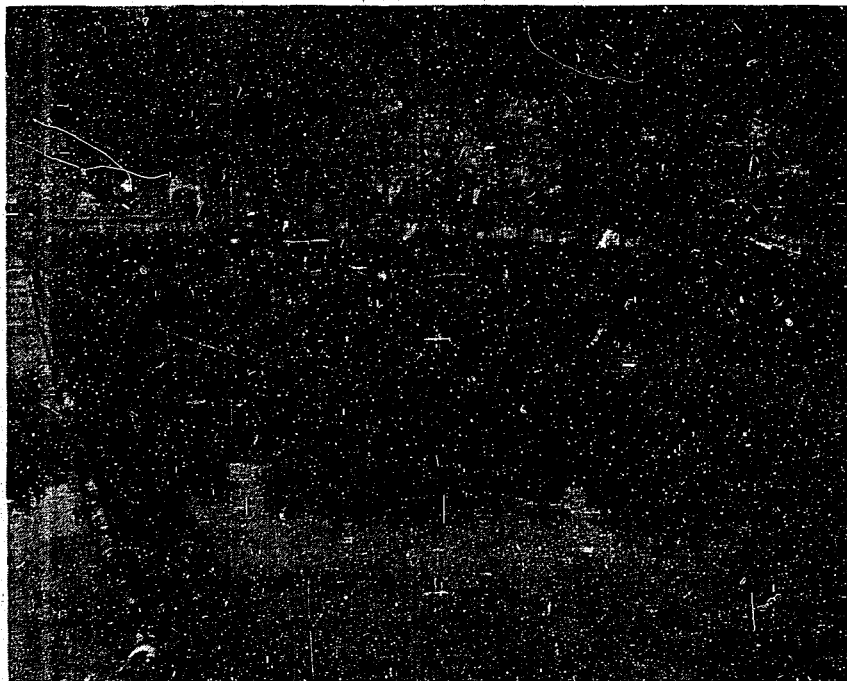


Figure 83
KAIBOKAN #67 (#1 Class)
Stern view



Figure 84
KAIBOKAN #67 (#1 Class)



Figure 85
KAIBOKAN #67 (#1 Class)
Bridge



Figure 86
KAIBOKAN #48 (#2 Class)

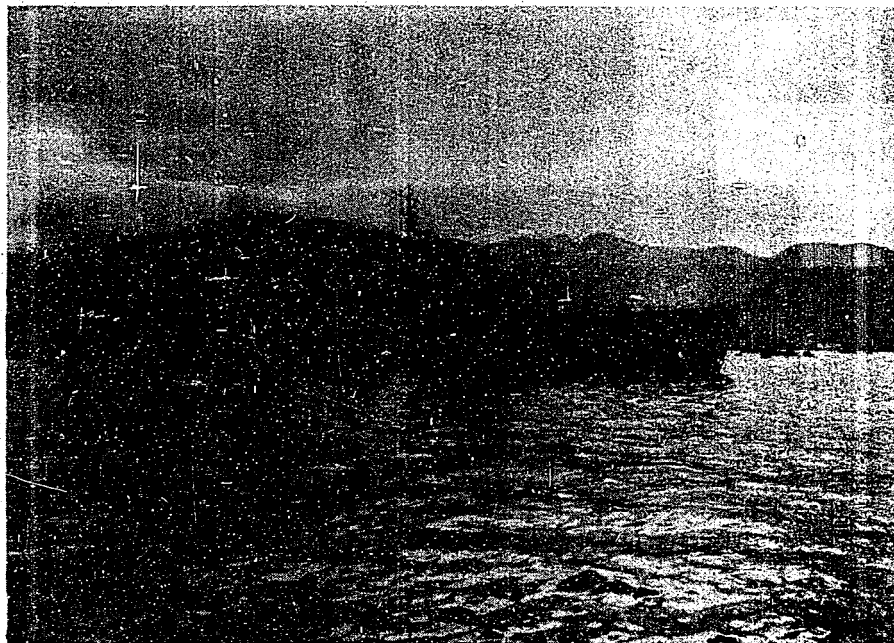


Figure 87
KAIBOKAN #48 (#2 Class)

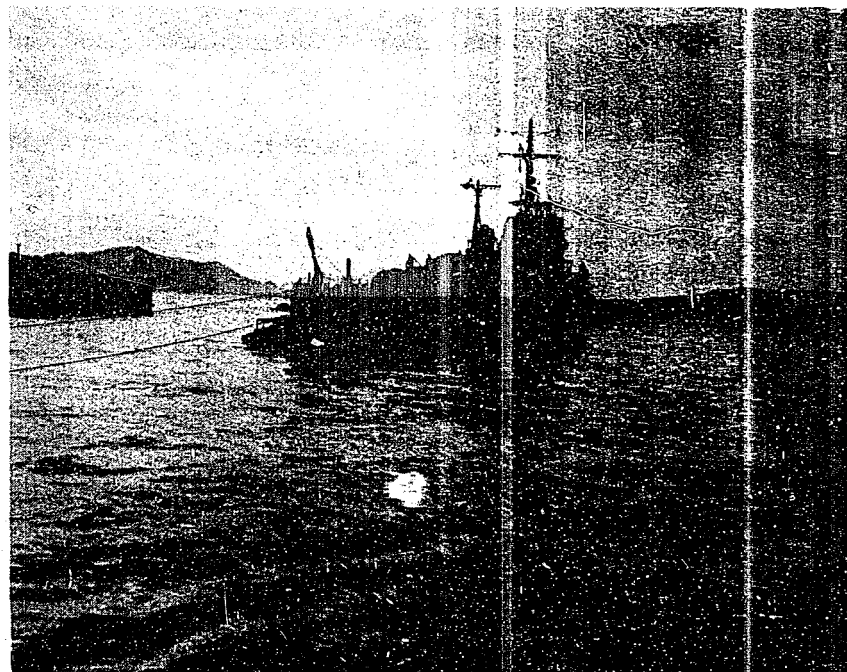


Figure 88
KAIBOKAN #48 (#2 Class)

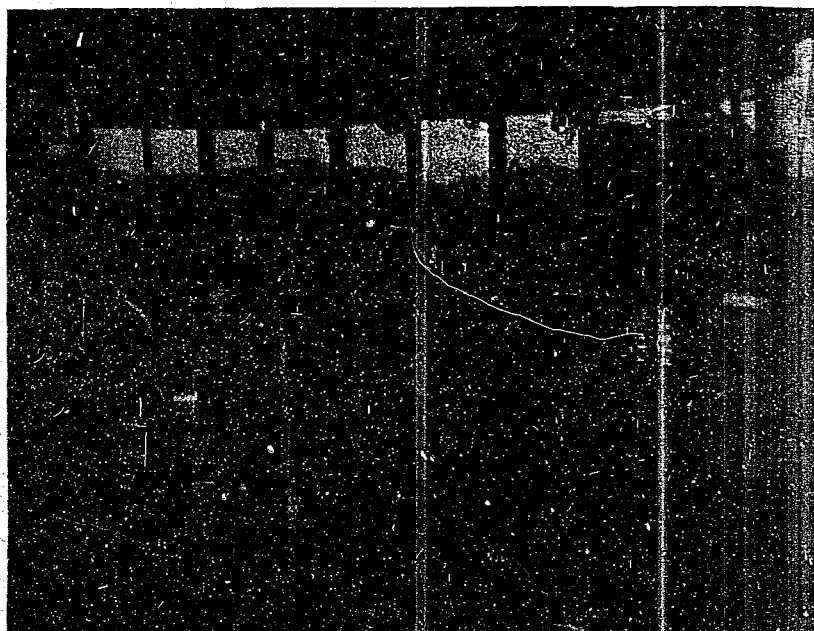


Figure 89
KAIBOKAN #48
Bridge

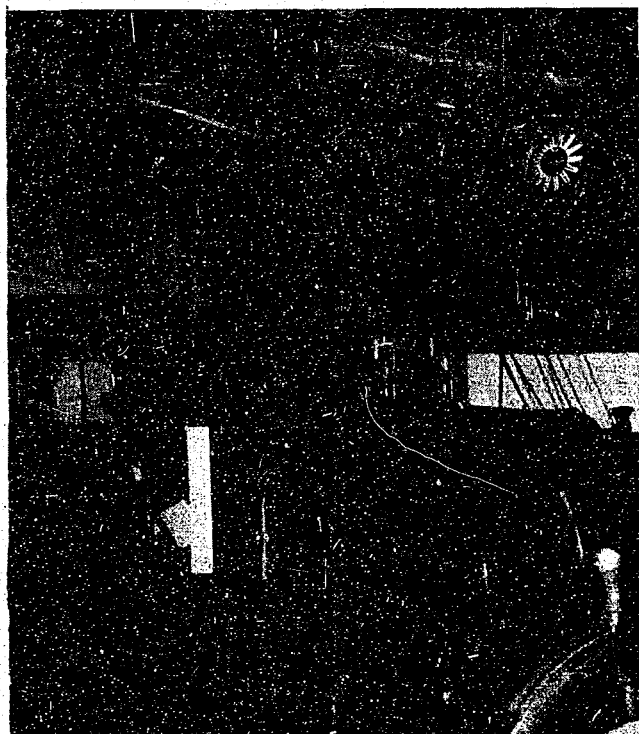


Figure 90
KAIBOKAN #48
Bridge (looking aft)

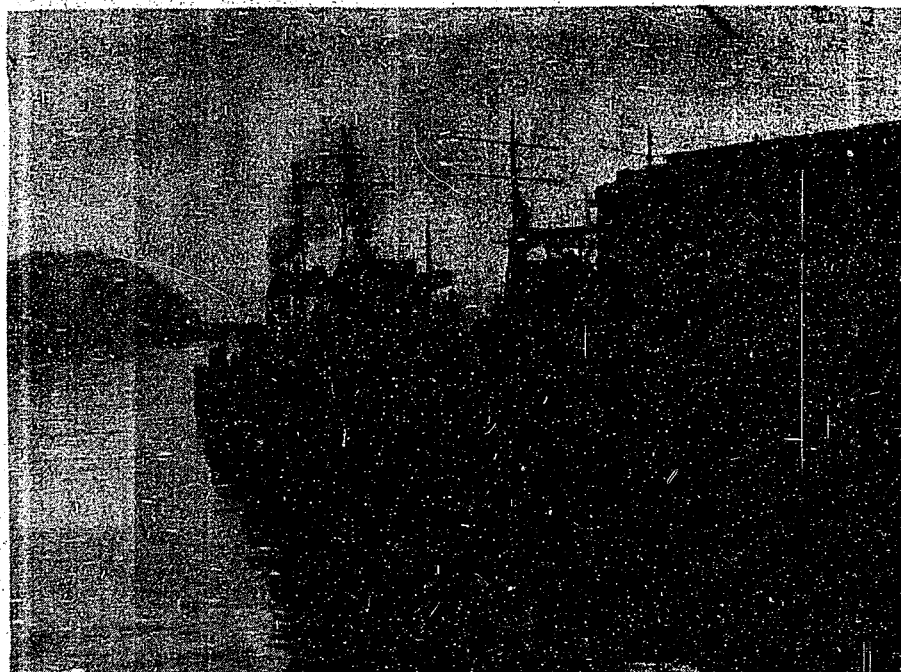


Figure 91
1st Class Transport #9

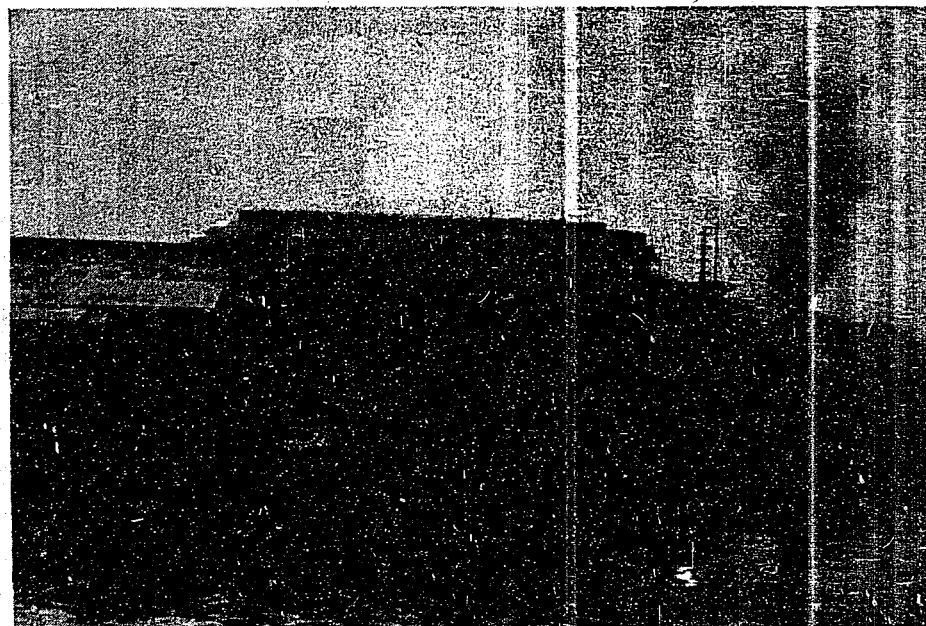


Figure 92
1st Class Transport #9



Figure 93
1st Class Transport #9



Figure 94
1st Class Transport #9
Bridge



Figure 95
2nd Class Transport #110
Bow view



Figure 96
2nd Class Transport #110
Stern view

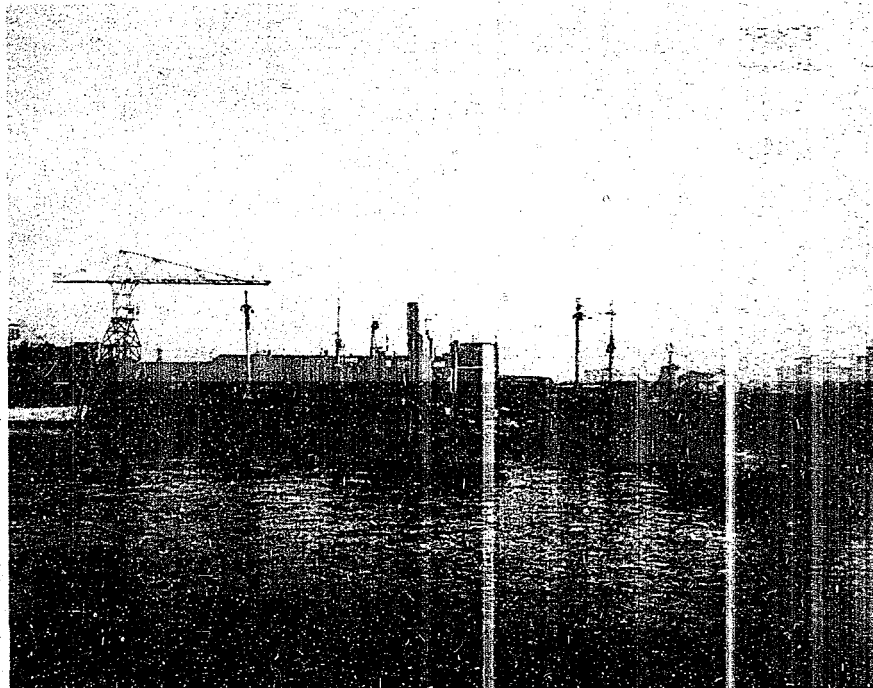


Figure 97
2nd Class Transport #110



Figure 98
2nd Class Transport #110
Gun mount

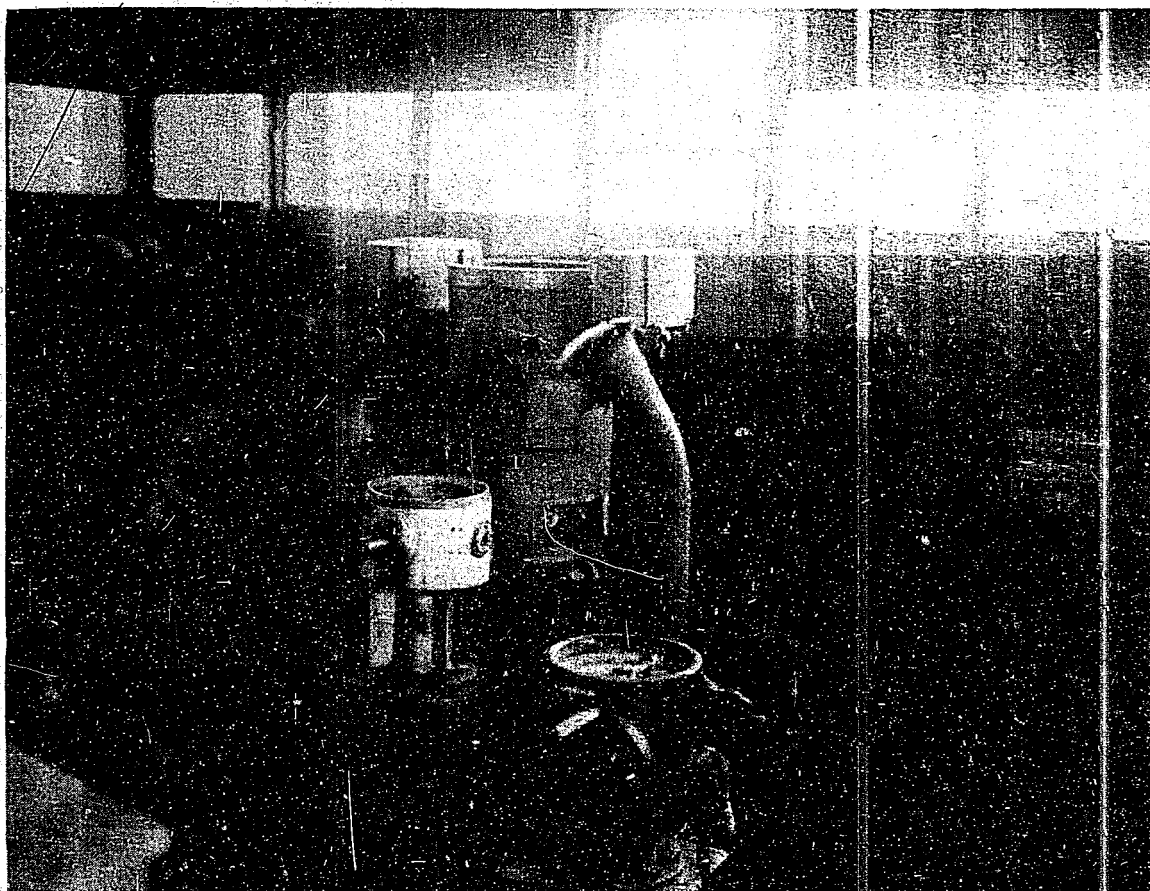


Figure 99
2nd Class Transport #110
Bridge